

Recombinant Rhesus IL13 protein

Cat. No. IL13-542R **Lot. No.** (See product label)

SPECIFICATION

Product Overview	Recombinant Rhesus IL13 protein was expressed in Escherichia coli.
Species	Rhesus macaque
Source	E.coli
ProteinLength	114
Description	<p>Interleukin-13 (IL-13) is expressed by the IL13 gene and secreted by many cell types, especially T helper type 2 (Th2) cells. The high solution form of IL-13 reported to be a monomer with two internal disulfide bonds that contribute to a bundled four α-helix configuration. Targeted deletion of IL-13 in mice resulted in impaired Th2 cell development and indicated an important role for IL-13 in the expulsion of gastrointestinal parasites. IL-13 exerts anti-inflammatory effects on monocytes and macrophages and it inhibits the expression of inflammatory cytokines such as IL-1beta, TNF-alpha, IL-6 and IL-8. IL-13 has also been shown to enhance B cell proliferation and to induce isotype switching resulting in increased production of IgE. Mature rhesus IL-13 shares 94 %, 58 %, and 60 % amino acid sequence identity with human, mouse, and rat IL13, respectively.</p>
Form	Lyophilized from a 0.2 μ m filtered concentrated solution in PBS, pH 7.4, 3% trehalose.
Bio-activity	Fully biologically active when compared to standard. The ED50 as determined by a cell proliferation assay using human TF-1 cells is less than 5 ng/ml, corresponding to a specific activity of > 2.0 \times

 Tel: 1-631-559-9269 1-516-512-3133

 Email: info@creative-biomart.com  Fax: 1-631-938-8127

 45-1 Ramsey Road, Shirley, NY 11967, USA

	10 ⁵ IU/mg.
Molecular Mass	Approximately 12.6 kDa, a single non-glycosylated polypeptide chain containing 114 amino acids.
AA Sequence	SPSPVPRSTALKELIEELVNITQNQKAPLCNGSMVWSINLTAGVYCAALES LINVSGC SAIEKTQRMLNGFCPHKVSAGQFSSLRVRDTKIEVAQFVKDLLVHLKCLFREGRFN
Endotoxin	Less than 1 EU/μg of rRhIL-13 as determined by LAL method.
Purity	>98% by SDS-PAGE and HPLC analysis.
Storage	Use a manual defrost freezer and avoid repeated freeze-thaw cycles. 12 months from date of receipt, -20 to -70 centigrade as supplied. 1 month, 2 to 8 centigrade under sterile conditions after reconstitution. 3 months, -20 to -70 centigrade under sterile conditions after reconstitution.
Reconstitution	We recommend that this vial be briefly centrifuged prior to opening to bring the contents to the bottom. Reconstitute in sterile distilled water or aqueous buffer containing 0.1 % BSA to a concentration of 0.1-1.0 mg/mL. Stock solutions should be apportioned into working aliquots and stored at ≤-20centigrade. Further dilutions should be made in appropriate buffered solutions.

GENE INFORMATION

Gene Name	IL13
Official Symbol	IL13
Gene ID	574325

 Tel: 1-631-559-9269 1-516-512-3133

 Email: info@creative-biomart.com  Fax: 1-631-938-8127

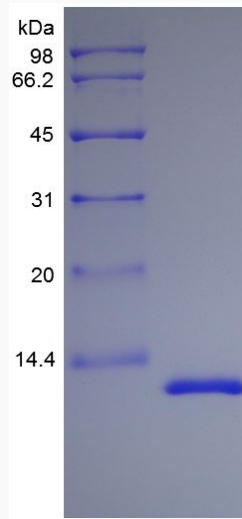
 45-1 Ramsey Road, Shirley, NY 11967, USA


mRNA Refseq [NM_001032929.1](#)

Protein Refseq [NP_001028101.1](#)

UniProt ID [Q864V6](#)

**SDS-PAGE of IL13-
542R**



 Tel: 1-631-559-9269 1-516-512-3133

 Email: info@creative-biomart.com  Fax: 1-631-938-8127

 45-1 Ramsey Road, Shirley, NY 11967, USA