

Recombinant Human IL13 protein, His-Avi-tagged

Cat. No. IL13-589H Lot. No. (See product label)

SPECIFICATION

Product Overview	Recombinant Human IL13 protein(AAK53823)(Gly21-Asn132), fused with N-terminal His and Avi tag, was expressed in HEK293.
Species	Human
Source	HEK293
ProteinLength	Gly21-Asn132
Tag	N-His-Avi
Form	Lyophilized from 0.22µm filtered solution in PBS (pH 7.4). Normally 5% trehalose is added as protectant before lyophilization.
Bio-activity	Immobilized Human IL-13, His Tag at 2µg/ml (100µl/well) on the plate. Dose response curve for Human IL-13Ra2, hFc Tag with the EC50 of 1.0µg/ml determined by ELISA.
Molecular Mass	The protein has a predicted MW of 15.3 kDa. Due to glycosylation, the protein migrates to 15 kDa and 25-45 kDa based on Tris-Bis PAGE result.
Endotoxin	Less than 1EU per µg by the LAL method.
Purity	> 95% as determined by Tris-Bis PAGE; > 95% as determined by HPLC

 Tel: 1-631-559-9269 1-516-512-3133

 Email: info@creative-biomart.com  Fax: 1-631-938-8127

 45-1 Ramsey Road, Shirley, NY 11967, USA

Storage Reconstituted protein stable at -80°C for 12 months, 4°C for 1 week. Use a manual defrost freezer and avoid repeated freeze-thaw cycles.

Reconstitution Centrifuge tubes before opening. Reconstituting to a concentration more than 100 µg/ml is recommended. Dissolve the lyophilized protein in distilled water.

GENE INFORMATION

Gene Name [IL13 interleukin 13 \[Homo sapiens \]](#)

Official Symbol [IL13](#)

Synonyms IL13; interleukin 13; interleukin-13; allergic rhinitis; ALRH; BHR1; Bronchial hyperresponsiveness 1 (bronchial asthma); IL 13; MGC116786; MGC116788; MGC116789; P600; Bronchial hyperresponsiveness-1 (bronchial asthma); IL-13;

Gene ID [3596](#)

mRNA Refseq [NM_002188](#)

Protein Refseq [NP_002179](#)

MIM [147683](#)

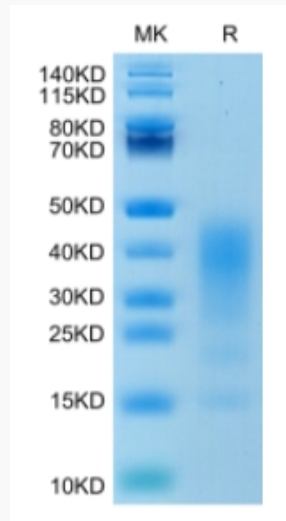
UniProt ID [P35225](#)

 Tel: 1-631-559-9269 1-516-512-3133

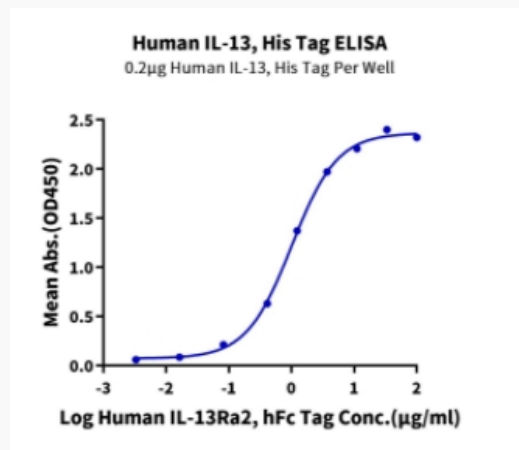
 Email: info@creative-biomart.com  Fax: 1-631-938-8127

 45-1 Ramsey Road, Shirley, NY 11967, USA

Tris-Bis PAGE



ELISA Data



 Tel: 1-631-559-9269 1-516-512-3133

 Email: info@creative-biomart.com  Fax: 1-631-938-8127

 45-1 Ramsey Road, Shirley, NY 11967, USA