

Recombinant Human IL13RA1 protein, hFc-tagged

Cat. No. IL13RA1-063H Lot. No. (See product label)

SPECIFICATION

Product Overview	Recombinant Human IL13RA1 protein(P78552)(Ala27-Thr343), fused with C-terminal hFc tag, was expressed in HEK293.
Species	Human
Source	HEK293
ProteinLength	Ala27-Thr343
Tag	C-hFc
Form	Lyophilized from 0.22µm filtered solution in PBS (pH 7.4). Normally 5% trehalose is added as protectant before lyophilization.
Bio-activity	Human IL-13Ra1, hFc Tag captured on CM5 Chip via Protein A can bind Human IL-13, His Tag with an affinity constant of 9.47 nM as determined in SPR assay (Biacore T200).
Molecular Mass	The protein has a predicted MW of 63.4 kDa. Due to glycosylation, the protein migrates to 78-90 kDa based on Tris-Bis PAGE result.
Endotoxin	Less than 1EU per µg by the LAL method.
Purity	> 95% as determined by Tris-Bis PAGE; > 95% as determined by HPLC

 Tel: 1-631-559-9269 1-516-512-3133

 Email: info@creative-biomart.com  Fax: 1-631-938-8127

 45-1 Ramsey Road, Shirley, NY 11967, USA

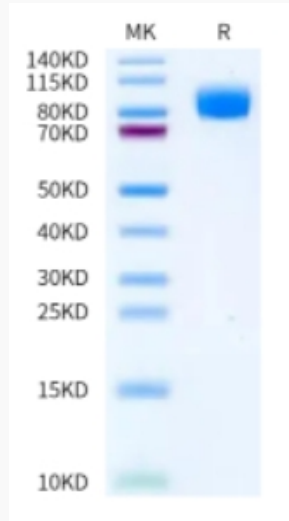
Storage	Reconstituted protein stable at -80°C for 12 months, 4°C for 1 week. Use a manual defrost freezer and avoid repeated freeze-thaw cycles.
Reconstitution	Centrifuge tubes before opening. Reconstituting to a concentration more than 100 µg/ml is recommended. Dissolve the lyophilized protein in distilled water.
GENE INFORMATION	
Gene Name	IL13RA1 interleukin 13 receptor, alpha 1 [Homo sapiens]
Official Symbol	IL13RA1
Synonyms	IL13RA1; interleukin 13 receptor, alpha 1; interleukin-13 receptor subunit alpha-1; CD213a1; CD213a1 antigen; IL 13Ra; IL13 receptor alpha 1 chain; NR4; CT19; IL-13RA1; IL-13R-alpha-1; IL-13R subunit alpha-1; cancer/testis antigen 19; IL13 receptor alpha-1 chain; IL-13 receptor subunit alpha-1; bB128O4.2.1 (interleukin 13 receptor, alpha 1); CD213A1; IL-13Ra;
Gene ID	3597
mRNA Refseq	NM_001560
Protein Refseq	NP_001551
MIM	300119
UniProt ID	P78552

 Tel: 1-631-559-9269 1-516-512-3133

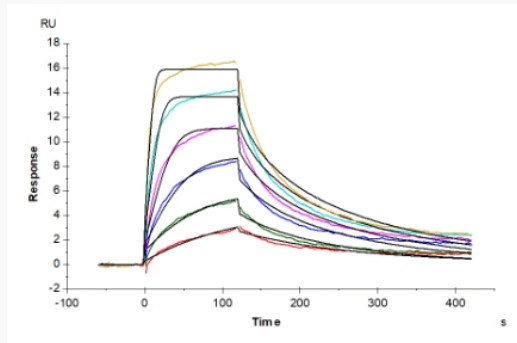
 Email: info@creative-biomart.com  Fax: 1-631-938-8127

 45-1 Ramsey Road, Shirley, NY 11967, USA

Tris-Bis PAGE



SPR Data



 Tel: 1-631-559-9269 1-516-512-3133

 Email: info@creative-biomart.com  Fax: 1-631-938-8127

 45-1 Ramsey Road, Shirley, NY 11967, USA