

Recombinant Human IL13RA1 protein, His-tagged

Cat. No. IL13RA1-2252H Lot. No. (See product label)

SPECIFICATION

Product Overview	Recombinant Human IL13RA1 protein(P78552-1)(Ala27-Thr343), fused with C-terminal His tag, was expressed in HEK293.
Species	Human
Source	HEK293
ProteinLength	Ala27-Thr343
Tag	C-His
Form	Supplied as 0.22µm filtered solution in PBS (pH 7.4).
Bio-activity	Human IL-13, His Tag immobilized on CM5 Chip can bind Human IL-13Ra1, His Tag with an affinity constant of 1µM as determined in a SPR assay (Biacore T200).
Molecular Mass	The protein has a predicted MW of 37.7 kDa. Due to glycosylation, the protein migrates to 50-70 kDa based on Tris-Bis PAGE result.
Endotoxin	Less than 1EU per µg by the LAL method.
Purity	> 95% as determined by Tris-Bis PAGE;> 95% as determined by HPLC
Storage	Valid for 12 months from date of receipt when stored at -80°C. Recommend to aliquot the protein into smaller quantities for optimal storage. Please do not repeated freeze-

 Tel: 1-631-559-9269 1-516-512-3133

 Email: info@creative-biomart.com  Fax: 1-631-938-8127

 45-1 Ramsey Road, Shirley, NY 11967, USA

thaw cycles.

Reconstitution

It is recommended that sterile water be added to the vial to prepare a stock solution of 0.2 ug/ul. Centrifuge the vial at 4°C before opening to recover the entire contents.

GENE INFORMATION

Gene Name

IL13RA1 interleukin 13 receptor, alpha 1 [Homo sapiens]

Official Symbol

IL13RA1

Synonyms

IL13RA1; interleukin 13 receptor, alpha 1; interleukin-13 receptor subunit alpha-1; CD213a1; CD213a1 antigen; IL 13Ra; IL13 receptor alpha 1 chain; NR4; CT19; IL-13RA1; IL-13R-alpha-1; IL-13R subunit alpha-1; cancer/testis antigen 19; IL13 receptor alpha-1 chain; IL-13 receptor subunit alpha-1; bB128O4.2.1 (interleukin 13 receptor, alpha 1); CD213A1; IL-13Ra;

Gene ID

3597

mRNA Refseq

NM_001560

Protein Refseq

NP_001551

MIM

300119

UniProt ID

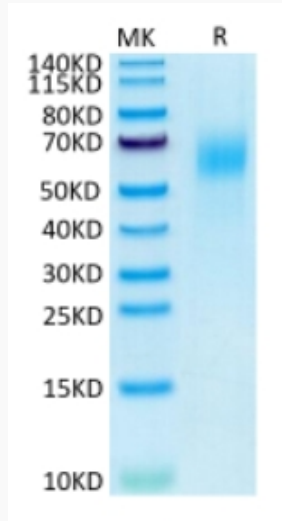
P78552

 Tel: 1-631-559-9269 1-516-512-3133

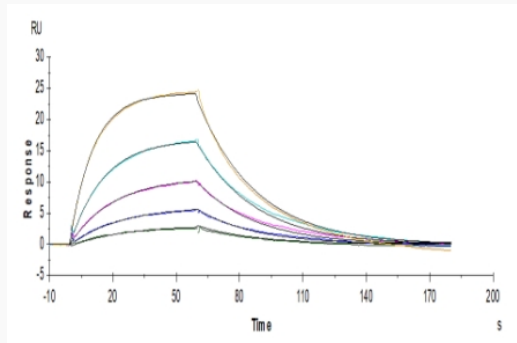
 Email: info@creative-biomart.com  Fax: 1-631-938-8127

 45-1 Ramsey Road, Shirley, NY 11967, USA

Tris-Bis PAGE



SPR Data



 Tel: 1-631-559-9269 1-516-512-3133

 Email: info@creative-biomart.com  Fax: 1-631-938-8127

 45-1 Ramsey Road, Shirley, NY 11967, USA