

## Active Recombinant Human IL13RA2 protein, hFc-tagged

Cat. No. IL13RA2-482H Lot. No. (See product label)

### SPECIFICATION

<b>Product Overview</b>	Recombinant Human IL13RA2 protein(Q14627)(Asp27-Arg343), fused with hFc tag, was expressed in HEK293.
<b>Species</b>	Human
<b>Source</b>	HEK293
<b>ProteinLength</b>	Asp27-Arg343
<b>Form</b>	Lyophilized from 0.22 µm filtered solution in PBS, pH7.4.
<b>Bio-activity</b>	When Recombinant Human IL-13RA2/hFC Protein is immobilized at 5g/mL (100 µ/well), the concentration of Recombinant Human IL-13/His Protein that produces 50% of the optimal binding response is approximately 40 ng/ml.
<b>Molecular Mass</b>	The protein has a calculated MW of 61kDa. The reducing (R) heterodimer protein migrates as 70-100 kDa due to glycosylation
<b>Endotoxin</b>	<1EU/mg
<b>Purity</b>	SDS-PAGE>95%SEC>95%
<b>Storage</b>	Store at -20°C.
<b>Reconstitution</b>	sterile H390

 Tel: 1-631-559-9269 1-516-512-3133

 Email: [info@creative-biomart.com](mailto:info@creative-biomart.com)  Fax: 1-631-938-8127

 45-1 Ramsey Road, Shirley, NY 11967, USA

## GENE INFORMATION

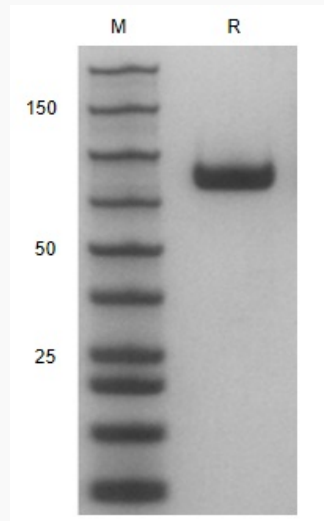
<b>Gene Name</b>	IL13RA2 interleukin 13 receptor, alpha 2 [ Homo sapiens ]
<b>Official Symbol</b>	IL13RA2
<b>Synonyms</b>	IL13RA2; interleukin 13 receptor, alpha 2; interleukin-13 receptor subunit alpha-2; cancer/testis antigen 19; CD213a2; CT19; IL 13R; IL13BP; IL-13RA2; IL-13R-alpha-2; IL-13R subunit alpha-2; IL-13 receptor subunit alpha-2; interleukin 13 binding protein; interleukin-13-binding protein; interleukin 13 receptor alpha 2 chain; IL-13R; CD213A2;
<b>Gene ID</b>	3598
<b>mRNA Refseq</b>	NM_000640
<b>Protein Refseq</b>	NP_000631
<b>MIM</b>	300130
<b>UniProt ID</b>	Q14627

 Tel: 1-631-559-9269 1-516-512-3133

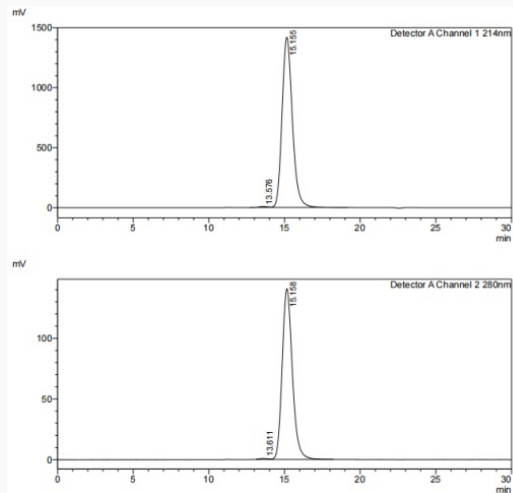
 Email: [info@creative-biomart.com](mailto:info@creative-biomart.com)  Fax: 1-631-938-8127

 45-1 Ramsey Road, Shirley, NY 11967, USA

**SDS-PAGE**



**SDS-HPLC**



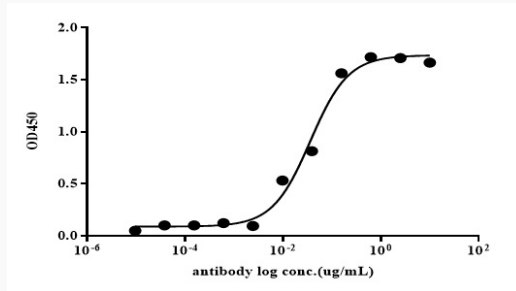
 Tel: 1-631-559-9269 1-516-512-3133

 Email: [info@creative-biomart.com](mailto:info@creative-biomart.com)  Fax: 1-631-938-8127

 45-1 Ramsey Road, Shirley, NY 11967, USA



ELISA



Tel: 1-631-559-9269 1-516-512-3133

Email: [info@creative-biomart.com](mailto:info@creative-biomart.com) Fax: 1-631-938-8127

45-1 Ramsey Road, Shirley, NY 11967, USA