

Recombinant Human IL13RA2 protein, hFc-tagged

Cat. No. IL13RA2-732H Lot. No. (See product label)

SPECIFICATION

Product Overview	Recombinant Human IL-13 R alpha 2 Protein is expressed from mammalian with a hFc Tag at the C-terminal. It contains Asp27-Leu342.
Species	Human
Source	HEK293
ProteinLength	It contains Asp27-Leu342.
Description	Two type 1 membrane proteins belonging to the hemopoietin receptor family have been cloned and shown to bind IL-13 with differing affinities. The lower affinity IL-13 binding protein, previously designated IL-13 R alpha, IL-13 R alpha ' or NR4, is now referred to as IL-13 R alpha 1. The high-affinity IL-13 binding protein, previously also designated IL-13 R or IL-13 R alpha ', is now referred to as IL-13 R alpha 2.
Form	Supplied as 0.22um filtered solution in PBS (pH 7.4).
Molecular Mass	The protein has a predicted MW of 63.7 KDa. Due to glycosylation, the protein migrates to 70-80 KDa based on Bis-Tris PAGE result.
Endotoxin	Less than 0.05 EU per ug by the LAL method.
Purity	> 95% as determined by Bis-Tris PAGE; > 95% as determined by HPLC
Storage	The product should be stored at -70°C. Please do not repeated freeze-thaw cycles.

 Tel: 1-631-559-9269 1-516-512-3133

 Email: info@creative-biomart.com  Fax: 1-631-938-8127

 45-1 Ramsey Road, Shirley, NY 11967, USA

Reconstitution It is recommended that sterile water be added to the vial to prepare a stock solution of 0.2 ug/ul. Centrifuge the vial at 4°C before opening to recover the entire contents.

GENE INFORMATION

Gene Name [IL13RA2 interleukin 13 receptor, alpha 2 \[Homo sapiens \]](#)

Official Symbol [IL13RA2](#)

Synonyms CD213a2 antigen; CD213a2; CT19; IL-13 R alpha 2; IL-13 receptor subunit alpha-2; cancer/testis antigen 19; IL13BP; IL13R alpha 2; IL-13R subunit alpha-2; IL13R; IL-13R; IL13RA2; IL-13Ra2; IL-13R-alpha-2; interleukin 13 binding protein; interleukin 13 receptor alpha 2 chain; interleukin 13 receptor, alpha 2; interleukin-13 receptor subunit alpha-2; Interleukin-13-binding protein

Gene ID [3598](#)

mRNA Refseq [NM_000640](#)

Protein Refseq [NP_000631](#)

MIM [300130](#)

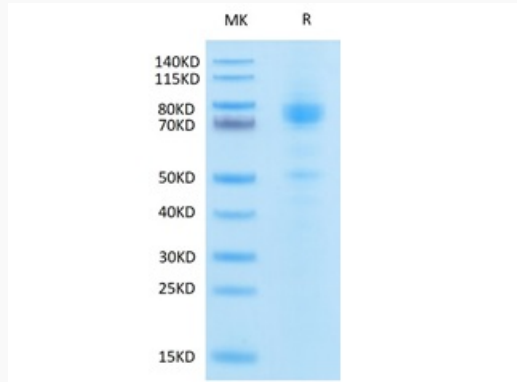
UniProt ID [Q14627](#)

 Tel: 1-631-559-9269 1-516-512-3133

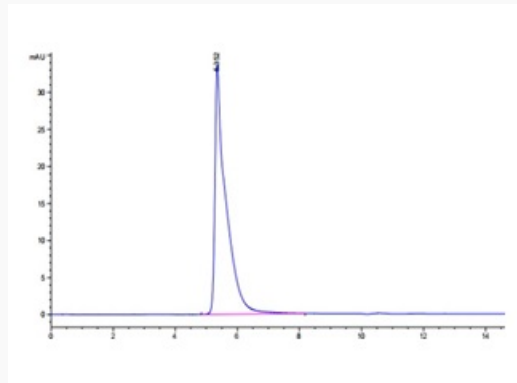
 Email: info@creative-biomart.com  Fax: 1-631-938-8127

 45-1 Ramsey Road, Shirley, NY 11967, USA

Tris-Bis PAGE



HPLC data



 Tel: 1-631-559-9269 1-516-512-3133

 Email: info@creative-biomart.com  Fax: 1-631-938-8127

 45-1 Ramsey Road, Shirley, NY 11967, USA