

# Active GMP Recombinant Porcine IL15 Protein, His-Tagged

Cat. No. IL15-01P Lot. No. (See product label)

## SPECIFICATION

<b>Product Overview</b>	GMP Recombinant Porcine IL15 Protein, His-Tagged was expressed in Escherichia coli cell-derived in an animal component free process under cGMP guidelines.
<b>Species</b>	Porcine
<b>Source</b>	E.coli
<b>Description</b>	Interleukin-15 (IL-15) is a cytokine with structural similarity to Interleukin-2 (IL-2). Like IL-2, IL-15 binds to and signals through a complex composed of IL-2/IL-15 receptor beta chain (CD122) and the common gamma chain (gamma-C, CD132). IL-15 is secreted by mononuclear phagocytes (and some other cells) following infection by virus(es). This cytokine induces cell proliferation of natural killer cells; cells of the innate immune system whose principal role is to kill virally infected cells.
<b>Form</b>	Lyophilized
<b>Bio-activity</b>	Measure by its ability to induce proliferation in TF-1 cells. The ED50 for this effect is <5.5 ng/mL.
<b>AA Sequence</b>	TWQHVISDLKKIEDLIRSIHMDATLYTESDAHPNCKVTAMKCFLELRVILQESRNSDI SDTVENLILANSSLSSIEYKTESGCKECEEELEEKKNINEFLKSFHIVQMFINPS with polyhistidine tag at the N-terminus
<b>Endotoxin</b>	<0.1 EU per 1 µg of the protein by the LAL method.

 Tel: 1-631-559-9269 1-516-512-3133

 Email: [info@creative-biomart.com](mailto:info@creative-biomart.com)  Fax: 1-631-938-8127

 45-1 Ramsey Road, Shirley, NY 11967, USA

<b>Purity</b>	>95% as determined by SDS-PAGE. Ni-NTA chromatography
<b>Notes</b>	Please use within one month after protein reconstitution.
<b>Storage</b>	Lyophilized protein should be stored at -20°C. Upon reconstitution, protein aliquots should be stored at -20°C or -80°C.
<b>Storage Buffer</b>	The protein was lyophilized from a solution containing 1X PBS, pH 7.4.
<b>Reconstitution</b>	It is recommended to reconstitute the lyophilized protein in sterile H2O to a concentration not less than 100 µg/mL and incubate the stock solution for at least 20 min to ensure sufficient re-dissolved.

## GENE INFORMATION

<b>Gene Name</b>	IL15 interleukin 15 [ <i>Sus scrofa</i> (pig) ]
<b>Official Symbol</b>	IL15
<b>Synonyms</b>	IL-15
<b>Gene ID</b>	397683
<b>mRNA Refseq</b>	NM_214390.1
<b>Protein Refseq</b>	NP_999555.1
<b>UniProt ID</b>	Q95253

 Tel: 1-631-559-9269 1-516-512-3133

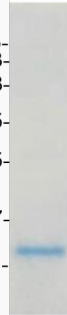
 Email: [info@creative-biomart.com](mailto:info@creative-biomart.com)  Fax: 1-631-938-8127

 45-1 Ramsey Road, Shirley, NY 11967, USA



kDa

75-  
63-  
48-  
35-  
25-  
17-  
11-



Tel: 1-631-559-9269 1-516-512-3133

Email: [info@creative-biomart.com](mailto:info@creative-biomart.com) Fax: 1-631-938-8127

45-1 Ramsey Road, Shirley, NY 11967, USA