

Recombinant Rhesus Monkey IL15 Protein, His-tagged

Cat. No. IL15-01R Lot. No. (See product label)

SPECIFICATION

Product Overview	Recombinant Rhesus Monkey IL15 (aa49-162) Protein with a 6xHis tag N-terminus was expressed in yeast.
Species	Rhesus macaque
Source	Yeast
ProteinLength	49-162 a.a.
Description	Cytokine that stimulates the proliferation of T-lymphocytes. Stimulation by IL-15 requires interaction of IL-15 with components of IL-2R, including IL-2R beta and probably IL-2R gamma but not IL-2R alpha.
Molecular Mass	14.9 kD
AA Sequence	NWVNVISDLKKIEDLIQSMHIDATLYTESDVHPSCKVTAMKCFLELQVISHESGDTDI HDTVENLILANNILSSNGNITESGCKECEEELEEKNIKEFLQSFVHIVQMFINTS
Notes	For research use only.
Storage	Short term: -20 centigrade; Long term: -80 centigrade; Avoid freeze-thaw cycles.
Storage Buffer	Tris, 50% Glycerol

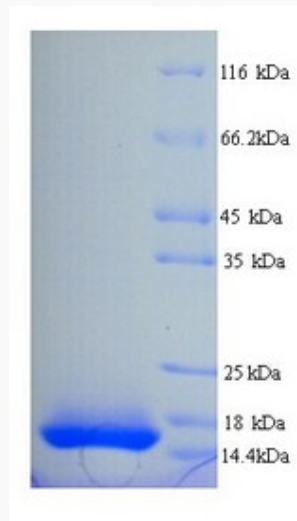
 Tel: 1-631-559-9269 1-516-512-3133

 Email: info@creative-biomart.com  Fax: 1-631-938-8127

 45-1 Ramsey Road, Shirley, NY 11967, USA

GENE INFORMATION

Gene Name	IL15 interleukin 15 [<i>Macaca mulatta</i> (Rhesus monkey)]
Official Symbol	IL15
Synonyms	IL15; interleukin 15; IL-15; interleukin-15
Gene ID	699616
mRNA Refseq	NM_001044731
Protein Refseq	NP_001038196
UniProt ID	P48092



Tel: 1-631-559-9269 1-516-512-3133

Email: info@creative-biomart.com Fax: 1-631-938-8127

45-1 Ramsey Road, Shirley, NY 11967, USA