

Active Recombinant Pig IL15 protein, His-tagged

Cat. No. IL15-1004P **Lot. No.** (See product label)

SPECIFICATION

Product Overview	Active Recombinant Pig IL15 protein(Q95253)(49~162 aa), fused with N-terminal His tag, was expressed in E.coli.
Species	Pig
Source	E.coli
ProteinLength	49-162 aa
Form	Lyophilized from sterile PBS, pH7.4, containing 0.01% SKL, 1mM DTT, 5% Trehalose and Proclin300.
Bio-activity	<p>Interleukin 15 (IL15) is a widely expressed cytokine that is structurally and functionally related to IL2, which plays an important role in many immunological diseases. IL15 also regulates T and natural killer (NK) cell activation and proliferation. The activity of recombinant pig IL15 was measured in a cell proliferation assay using MO7e human megakaryocytic leukemic cells. MO7e cells were seeded into triplicate wells of 96-well plates at a density of 30,000 cells/well in RPMI-1640 with the addition of various concentrations of rpIL15. After incubated for 72h, cells were observed by inverted microscope and cell proliferation was measured by Cell Counting Kit-8 (CCK-8). Briefly, 10 µof CCK-8 solution was added to each well of the plate, then the absorbance at 450 nm was measured using a microplate reader after incubating the plate for 1-4 hours at 37°C. Cell proliferation of MO7e cells after incubation with rpIL15 for 72h observed by inverted microscope was shown. The dose-effect curve of</p>

 Tel: 1-631-559-9269 1-516-512-3133

 Email: info@creative-biomart.com  Fax: 1-631-938-8127

 45-1 Ramsey Road, Shirley, NY 11967, USA

rpIL15 was shown. It was obvious that rpIL15 significantly promoted cell proliferation of MO7e cells. The EC50 for this effect is typically 0.55 ug/ml.

Molecular Mass	16.8kDa
Endotoxin	<1.0EU per 1µg (determined by the LAL method).
Purity	> 90% as determined by SDS-PAGE.
Storage	Avoid repeated freeze/thaw cycles. Store at -20°C for 12 months. Aliquot and store at -80°C for 12 months.
Reconstitution	Reconstitute in 10mM PBS (pH7.4) to a concentration of 0.1-1.0 mg/mL. Do not vortex.

GENE INFORMATION

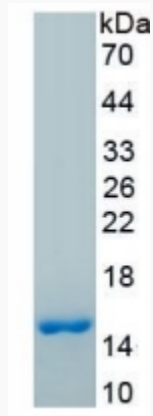
Gene Name	IL15 interleukin 15 [<i>Sus scrofa</i>]
Official Symbol	IL15
Synonyms	IL15; interleukin 15; interleukin-15; IL-15;
Gene ID	397683
mRNA Refseq	NM_214390
Protein Refseq	NP_999555

 Tel: 1-631-559-9269 1-516-512-3133

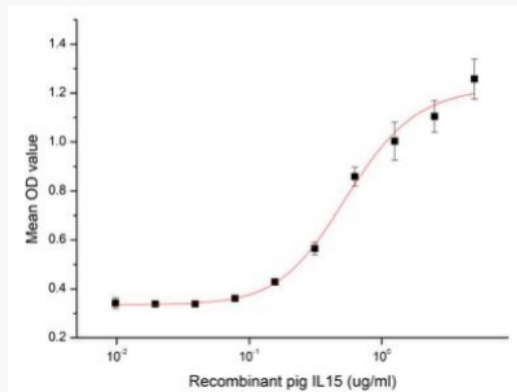
 Email: info@creative-biomart.com  Fax: 1-631-938-8127

 45-1 Ramsey Road, Shirley, NY 11967, USA

SDS-PAGE



Activity



 Tel: 1-631-559-9269 1-516-512-3133

 Email: info@creative-biomart.com  Fax: 1-631-938-8127

 45-1 Ramsey Road, Shirley, NY 11967, USA