

Recombinant Active Pig IL15 Protein, His-tagged(N-ter)

Cat. No. IL15-147P Lot. No. (See product label)

SPECIFICATION

Product Overview	Recombinant Active Pig IL15 Protein with His tag (N-ter) was expressed in E. coli.
Species	Pig
Source	E.coli
Description	<p>The protein encoded by this gene is a cytokine that regulates T and natural killer cell activation and proliferation. This cytokine and interleukine 2 share many biological activities. They are found to bind common hematopoietin receptor subunits, and may compete for the same receptor, and thus negatively regulate each other's activity. The number of CD8+ memory cells is shown to be controlled by a balance between this cytokine and IL2. This cytokine induces the activation of JAK kinases, as well as the phosphorylation and activation of transcription activators STAT3, STAT5, and STAT6. Studies of the mouse counterpart suggested that this cytokine may increase the expression of apoptosis inhibitor BCL2L1/BCL-x(L), possibly through the transcription activation activity of STAT6, and thus prevent apoptosis. Alternatively spliced transcript variants of this gene have been reported. [provided by RefSeq, Feb 2011]</p>
Form	Powder
Bio-activity	Determined by its ability to induce proliferation in TF-1 cells. The ED50 for this effect is < 5.5 ng/mL.
AA Sequence	TWQHVISDLKKIEDLIRSIHMDATLYTESDAHNPCKVTAMKCFLELRVILQESRNSDI SDTVENLIILANSSLSSIEYKTESGCKECEEELEEKKNINEFLKSFHIVQMFINPS

 Tel: 1-631-559-9269 1-516-512-3133

 Email: info@creative-biomart.com  Fax: 1-631-938-8127

 45-1 Ramsey Road, Shirley, NY 11967, USA

Endotoxin	Endotoxin level is less than 0.01 EU/μg of the protein, as determined by the LAL test.
Purity	> 95% (by SDS-PAGE)
Applications	SDS-PAGE
Notes	For laboratory research only, not for drug, diagnostic or other use.
Storage	Lyophilized protein should be stored at -20°C. After reconstitution, aliquot and store at -20°C or -80°C for up to one month. Storage in frost free freezers is not recommended. Avoid repeated freeze/thaw cycles. Suggest spin the vial prior to opening.
Storage Buffer	PBS (pH 7.4)
Reconstitution	It is recommended to reconstitute the lyophilized protein in sterile water to a concentration not less than 100 μg/mL and incubate the stock solution for at least 20 min at room temperature to make sure the protein is dissolved completely.

GENE INFORMATION

Gene Name	IL15 interleukin 15 [<i>Sus scrofa</i>]
Official Symbol	IL15
Synonyms	IL15; interleukin 15; interleukin-15; IL-15;
Gene ID	397683
mRNA Refseq	NM_214390

 Tel: 1-631-559-9269 1-516-512-3133

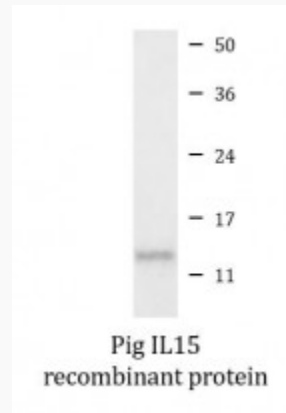
 Email: info@creative-biomart.com  Fax: 1-631-938-8127

 45-1 Ramsey Road, Shirley, NY 11967, USA

Protein Refseq

NP_999555

SDS-PAGE



 Tel: 1-631-559-9269 1-516-512-3133

 Email: info@creative-biomart.com  Fax: 1-631-938-8127

 45-1 Ramsey Road, Shirley, NY 11967, USA