

## Active Recombinant Human IL15 Protein (Asn49-Ser162), N-His tagged, Animal-free, Carrier-free

Cat. No. IL15-180H Lot. No. (See product label)

### SPECIFICATION

<b>Product Overview</b>	Recombinant Human IL15 Protein (Asn49-Ser162) with N-His tag was expressed in E. coli and Animal-free as well as Carrier-free.
<b>Species</b>	Human
<b>Source</b>	E.coli
<b>ProteinLength</b>	Asn49-Ser162
<b>Description</b>	Interleukin-15 (IL-15) is a 14-15 kDa glycoprotein with immune regulatory functions in many diverse cell types. IL-15 can be constitutively expressed in a variety of cell types stored as intracellular protein in the cytoplasm as well as transport to the cell surface, while only secreted from some cell types including monocytes, dendritic cells, epithelial cells, bone marrow stromal cells, and fibroblasts. As a pleiotropic cytokine, IL-15 mediates the crosstalk between innate immunity and adaptive immunity whose principal role is to kill virally infected cells. IL-15 plays a crucial role in the development, differentiation, and survival of NK cells. In monocytes, IL-15 induces the production of IL-8 and monocyte chemotactic protein 1 (MCP-1), which recruits neutrophils and monocytes to sites of infection. IL-15 can also act as a chemo-attractant in T lymphocytes and regulate the differentiation of T lymphocytes.
<b>Form</b>	Lyophilized
<b>Bio-activity</b>	Measure by its ability to induce proliferation in CTLL-2 cells. The ED50 for this effect

 Tel: 1-631-559-9269 1-516-512-3133

 Email: [info@creative-biomart.com](mailto:info@creative-biomart.com)  Fax: 1-631-938-8127

 45-1 Ramsey Road, Shirley, NY 11967, USA

is < 3 ng/mL. The specific activity of recombinant human IL-15 is > 2 × 10<sup>6</sup> IU/mg.

**Molecular Mass**

The protein has a calculated MW of 13.7 kDa.  
The protein migrates as 13 kDa under reducing condition (SDS-PAGE analysis).

**Endotoxin**

< 0.01 EU/μg of the protein by the LAL method.

**Purity**

>98% as determined by SDS-PAGE analysis.

**Storage**

This product is stable after storage at:  
-20 centigrade for 12 months in lyophilized state from date of receipt.  
-20 or -80 centigrade for 1 month under sterile conditions after reconstitution.  
Avoid repeated freeze/thaw cycles.

**Storage Buffer**

Lyophilized from a 0.2 μm filtered solution of PBS, pH 8.0.

**Reconstitution**

It is recommended to reconstitute the lyophilized protein in sterile H<sub>2</sub>O to a concentration not less than 200 μg/mL and incubate the stock solution for at least 20 min to ensure sufficient re-dissolved.

**Shipping**

The product is shipped with polar packs. Upon receipt, store it immediately at -20 centigrade or lower for long term storage.

## GENE INFORMATION

**Gene Name**

IL15 interleukin 15 [ Homo sapiens (human) ]

**Official Symbol**

IL15

**Synonyms**

IL15; interleukin 15; interleukin-15; IL 15; MGC9721; IL-15;

 Tel: 1-631-559-9269 1-516-512-3133

 Email: [info@creative-biomart.com](mailto:info@creative-biomart.com)  Fax: 1-631-938-8127

 45-1 Ramsey Road, Shirley, NY 11967, USA

<b>Gene ID</b>	3600
----------------	------

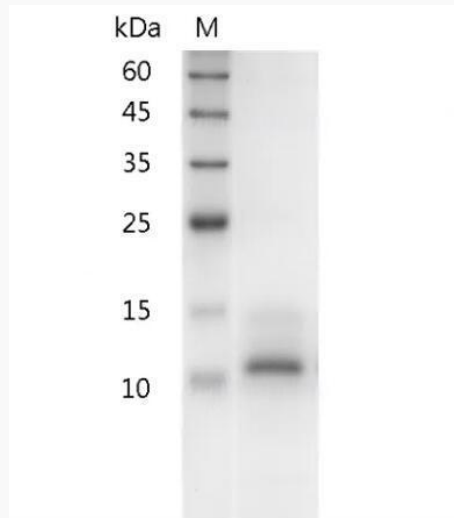
<b>mRNA Refseq</b>	NM_000585
--------------------	-----------

<b>Protein Refseq</b>	NP_000576
-----------------------	-----------

<b>MIM</b>	600554
------------	--------

<b>UniProt ID</b>	P40933
-------------------	--------

**SDS-PAGE analysis  
of recombinant  
human IL-15.**



 Tel: 1-631-559-9269 1-516-512-3133

 Email: [info@creative-biomart.com](mailto:info@creative-biomart.com)  Fax: 1-631-938-8127

 45-1 Ramsey Road, Shirley, NY 11967, USA