

## Active Recombinant Pig IL15 Protein (Thr49-Ser162), N-His tagged, Animal-free, Carrier-free

Cat. No. IL15-212P Lot. No. (See product label)

### SPECIFICATION

<b>Product Overview</b>	Recombinant Pig IL15 Protein (Thr49-Ser162) with N-His tag was expressed in E. coli and Animal-free as well as Carrier-free.
<b>Species</b>	Pig
<b>Source</b>	E.coli
<b>ProteinLength</b>	Thr49-Ser162
<b>Description</b>	Interleukin 15 (IL-15) is a 12.65 kDa cytokine with 114 amino acid residues and is primarily produced from mononuclear phagocytes like dendritic cells, monocytes, and macrophages. IL-15 plays a critical role in the innate immune system when IL-15 binds to the IL-15 receptor. In addition, IL-15 mediates biological functions, such as the proliferation of natural killer cells and T cells, preventing the immune cells from apoptosis by activating STAT3 /JAK and PI3K/ALT signaling pathways.
<b>Form</b>	Lyophilized
<b>Bio-activity</b>	Measure by its ability to induce proliferation in TF-1 cells. The ED50 for this effect is < 5.5 ng/mL.
<b>Molecular Mass</b>	The protein has a calculated MW of 14.06 kDa. The protein migrates as 11-17 kDa under reducing condition (SDS-PAGE analysis).

 Tel: 1-631-559-9269 1-516-512-3133

 Email: [info@creative-biomart.com](mailto:info@creative-biomart.com)  Fax: 1-631-938-8127

 45-1 Ramsey Road, Shirley, NY 11967, USA

<b>Endotoxin</b>	< 0.01 EU/μg of the protein by the LAL method.
<b>Purity</b>	>95% as determined by SDS-PAGE analysis.
<b>Storage</b>	This product is stable after storage at: -20 centigrade for 12 months in lyophilized state from date of receipt. -20 or -80 centigrade for 1 month under sterile conditions after reconstitution. Avoid repeated freeze/thaw cycles.
<b>Storage Buffer</b>	Lyophilized from a 0.2 μm filtered solution of PBS, pH 7.4.
<b>Reconstitution</b>	It is recommended to reconstitute the lyophilized protein in sterile H2O to a concentration not less than 200 μg/mL and incubate the stock solution for at least 20 min to ensure sufficient re-dissolved.
<b>Shipping</b>	The product is shipped with polar packs. Upon receipt, store it immediately at -20 centigrade or lower for long term storage.

## GENE INFORMATION

<b>Gene Name</b>	<a href="#">IL15 interleukin 15 [ Sus scrofa ]</a>
<b>Official Symbol</b>	<a href="#">IL15</a>
<b>Synonyms</b>	IL15; interleukin 15; interleukin-15; IL-15;
<b>Gene ID</b>	<a href="#">397683</a>
<b>mRNA Refseq</b>	<a href="#">NM_214390</a>
<b>Protein Refseq</b>	<a href="#">NP_999555</a>

 Tel: 1-631-559-9269 1-516-512-3133

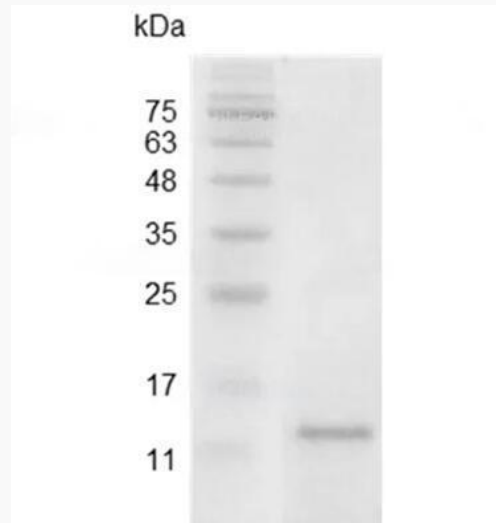
 Email: [info@creative-biomart.com](mailto:info@creative-biomart.com)  Fax: 1-631-938-8127

 45-1 Ramsey Road, Shirley, NY 11967, USA

UniProt ID

Q95253

**SDS-PAGE analysis  
of recombinant  
swine IL-15.**



 Tel: 1-631-559-9269 1-516-512-3133

 Email: [info@creative-biomart.com](mailto:info@creative-biomart.com)  Fax: 1-631-938-8127

 45-1 Ramsey Road, Shirley, NY 11967, USA