

Recombinant Human IL15 protein

Cat. No. IL15-24H Lot. No. (See product label)

SPECIFICATION

Product Overview	Recombinant Human IL15 protein was expressed in Escherichia coli.
Species	Human
Source	E.coli
ProteinLength	114
Description	<p>Human Interleukin-15 (IL-15) is expressed by the IL15 gene located on the chromosome 4. It shares approximately 97 % and 73 % sequence identity with simian and murine IL-15, respectively. Both human and simian IL-15 are active on murine cells. IL-15 is secreted by mononuclear phagocytes (and some other cells), especially macrophages following infection by virus. It possesses a variety of biological functions, including stimulating and maintaining of cellular immune responses, especially regulating T and natural killer (NK) cell activation and proliferation. In addition, it shares many biological properties with IL-2, including T, B and NK cell-stimulatory activities. IL-15 signals through a complex composed of IL-2/IL-15 receptor beta chain. Although IL-15 lacks sequence homology with IL-2, it has recently been shown that both the beta and gamma chains of the IL-2 receptor are utilized for IL-15 binding and signaling. In addition, an IL-15 specific binding protein has also been cloned from a mouse T cell clone.</p>
Form	Lyophilized from a 0.2µm filtered concentrated solution in PBS, pH 7.4.
Bio-activity	Fully biologically active when compared to standard. The ED50 as determined by a

 Tel: 1-631-559-9269 1-516-512-3133

 Email: info@creative-biomart.com  Fax: 1-631-938-8127

 45-1 Ramsey Road, Shirley, NY 11967, USA

cell proliferation assay using murine CTLL-2 cells is less than 0.5 ng/ml, corresponding to a specific activity of $> 2.0 \times 10^6$ IU/mg.

Molecular Mass

Approximately 12.9 kDa, a single non-glycosylated polypeptide chain containing 114 amino acids.

AA Sequence

NWVNVISDLKKIEDLIQSMHIDATLYTESDVHPSCKVTAMKCFLLLELQVISLES GDASI
HDTVENLILANNSLSSNGNVTESGCKECEEELEEKNIKEFLQSFVHIVQMFINTS

Endotoxin

Less than 1 EU/g of rHuIL-15 as determined by LAL method.

Purity

>97% by SDS-PAGE and HPLC analysis.

Storage

Use a manual defrost freezer and avoid repeated freeze-thaw cycles. 12 months from date of receipt, -20 to -70 centigrade as supplied. 1 month, 2 to 8 centigrade under sterile conditions after reconstitution. 3 months, -20 to -70 centigrade under sterile conditions after reconstitution.

Reconstitution

We recommend that this vial be briefly centrifuged prior to opening to bring the contents to the bottom. Reconstitute in sterile distilled water or aqueous buffer containing 0.1 % BSA to a concentration of 0.1-1.0 mg/mL. Stock solutions should be apportioned into working aliquots and stored at ≤ -20 centigrade. Further dilutions should be made in appropriate buffered solutions.

GENE INFORMATION

Gene Name

IL15

Official Symbol

IL15

Synonyms

IL15; interleukin 15; interleukin-15; IL 15; MGC9721; IL-15;

 Tel: 1-631-559-9269 1-516-512-3133

 Email: info@creative-biomart.com  Fax: 1-631-938-8127

 45-1 Ramsey Road, Shirley, NY 11967, USA

Gene ID 3600

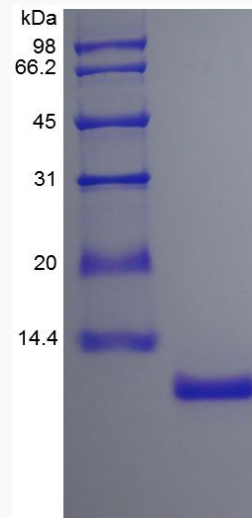
mRNA Refseq NM_000585

Protein Refseq NP_000576

MIM 600554

UniProt ID P40933

**SDS-PAGE of IL15-
24H**



 Tel: 1-631-559-9269 1-516-512-3133

 Email: info@creative-biomart.com  Fax: 1-631-938-8127

 45-1 Ramsey Road, Shirley, NY 11967, USA