

GMP Recombinant Human IL15 protein

Cat. No. IL15-4329HG Lot. No. (See product label)

SPECIFICATION

Product Overview Recombinant Human IL15 protein was expressed in Escherichia coli. This product is produced under cGMP guidelines.

Species Human

Source E.coli

ProteinLength 114

Description Human Interleukin-15 (IL-15) is expressed by the IL15 gene located on the chromosome 4. It shares approximately 97 % and 73 % sequence identity with simian and murine IL-15, respectively. Both human and simian IL-15 are active on murine cells. IL-15 is secreted by mononuclear phagocytes (and some other cells), especially macrophages following infection by virus. It possesses a variety of biological functions, including stimulating and maintaining of cellular immune responses, especially regulating T and natural killer (NK) cell activation and proliferation. In addition, it shares many biological properties with IL-2, including T, B and NK cell-stimulatory activities. IL-15 signals through a complex composed of IL-2/IL-15 receptor beta chain. Although IL-15 lacks sequence homology with IL-2, it has recently been shown that both the beta and gamma chains of the IL-2 receptor are utilized for IL-15 binding and signaling. In addition, an IL-15 specific binding protein has also been cloned from a mouse T cell clone.

Form Lyophilized from a 0.2µm filtered concentrated solution in PBS, pH 7.4.

 Tel: 1-631-559-9269 1-516-512-3133

 Email: info@creative-biomart.com  Fax: 1-631-938-8127

 45-1 Ramsey Road, Shirley, NY 11967, USA

Bio-activity	Fully biologically active when compared to standard. The ED50 as determined by a cell proliferation assay using murine CTLL-2 cells is less than 0.5 ng/ml, corresponding to a specific activity of > 2.0 × 10 ⁶ IU/mg.
Molecular Mass	Approximately 12.9 kDa, a single non-glycosylated polypeptide chain containing 114 amino acids.
AA Sequence	NWVNVISDLKKIEDLIQSMHIDATLYTESDVHPSCKVTAMKCFLELQVISLES GDASI HDTVENLILANNSLSSNGNVTESGCKECEEELEEKNIKEFLQSFVHIVQMFINTS
Endotoxin	Less than 0.01 EU/g of rHuIL-15 GMP as determined by LAL method.
Purity	>98% by SDS-PAGE and HPLC analysis.
Storage	Use a manual defrost freezer and avoid repeated freeze-thaw cycles. 12 months from date of receipt, -20 to -70 centigrade as supplied. 1 month, 2 to 8 centigrade under sterile conditions after reconstitution. 3 months, -20 to -70 centigrade under sterile conditions after reconstitution.
Reconstitution	We recommend that this vial be briefly centrifuged prior to opening to bring the contents to the bottom. Reconstitute in sterile distilled water or aqueous buffer containing 0.1 % BSA to a concentration of 0.1-1.0 mg/mL. Stock solutions should be apportioned into working aliquots and stored at ≤-20 centigrade. Further dilutions should be made in appropriate buffered solutions.

GENE INFORMATION

Gene Name	IL15
Official Symbol	IL15

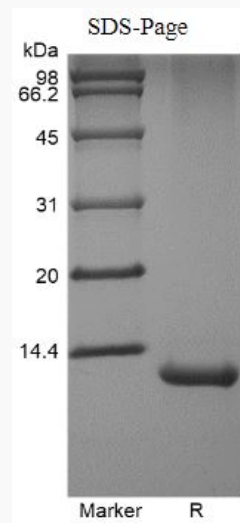
 Tel: 1-631-559-9269 1-516-512-3133

 Email: info@creative-biomart.com  Fax: 1-631-938-8127

 45-1 Ramsey Road, Shirley, NY 11967, USA

Synonyms	IL15; interleukin 15; interleukin-15; IL 15; MGC9721; IL-15;
Gene ID	3600
mRNA Refseq	NM_000585
Protein Refseq	NP_000576
MIM	600554
UniProt ID	P40933

SDS-PAGE of IL15-4329HG

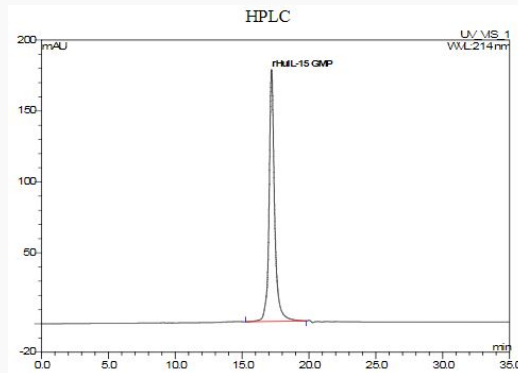


 Tel: 1-631-559-9269 1-516-512-3133

 Email: info@creative-biomart.com  Fax: 1-631-938-8127

 45-1 Ramsey Road, Shirley, NY 11967, USA

**HPLC of IL15-
4329HG**



 Tel: 1-631-559-9269 1-516-512-3133

 Email: info@creative-biomart.com  Fax: 1-631-938-8127

 45-1 Ramsey Road, Shirley, NY 11967, USA