

Recombinant Human IL15 protein, His-tagged

Cat. No. IL15-4663H Lot. No. (See product label)

SPECIFICATION

Product Overview	Recombinant Human IL15 protein(P40933)(49-162 aa), fused with N-terminal His tag, was expressed in Yeast.
Species	Human
Source	Yeast
ProteinLength	49-162 aa
Form	For liquid formulations, the standard storage buffer consists of a Tris or PBS based solution supplemented with 5-50% glycerol. When provided as lyophilized powder, the product undergoes freeze-drying from a Tris- or PBS-based formulation containing 6% trehalose, adjusted to pH 8.0 prior to the lyophilization process.
Molecular Mass	14.3 kDa
AASequence	NWVNVISDLKKIEDLIQSMHIDATLYTESDVHPSCCKVTAMKCFLLLELQVISLESGDASI HDTVENLILANNLSLSSNGNVTESGCKECEEELEEKNIKEFLQSFVHIVQMFINTS
Purity	Greater than 95% as determined by SDS-PAGE.
Storage	Store at -20°C/-80°C upon receipt, aliquoting is necessary for mutiple use. Avoid repeated freeze-thaw cycles.
Reconstitution	Please reconstitute protein indeionized sterile water to a concentration of 0.1-1.0

 Tel: 1-631-559-9269 1-516-512-3133

 Email: info@creative-biomart.com  Fax: 1-631-938-8127

 45-1 Ramsey Road, Shirley, NY 11967, USA



mg/mL. Aliquot for long-term storage at -80°C.

GENE INFORMATION

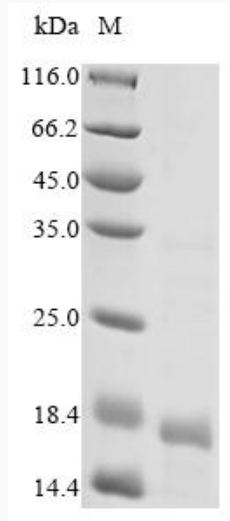
Gene Name	IL15 interleukin 15 [Homo sapiens]
Official Symbol	IL15
Synonyms	IL15; interleukin 15; interleukin-15; IL 15; MGC9721; IL-15;
Gene ID	3600
mRNA Refseq	NM_000585
Protein Refseq	NP_000576
MIM	600554
UniProt ID	P40933

 Tel: 1-631-559-9269 1-516-512-3133

 Email: info@creative-biomart.com  Fax: 1-631-938-8127

 45-1 Ramsey Road, Shirley, NY 11967, USA

SDS-PAGE



 Tel: 1-631-559-9269 1-516-512-3133

 Email: info@creative-biomart.com  Fax: 1-631-938-8127

 45-1 Ramsey Road, Shirley, NY 11967, USA