

Active Recombinant Human Interleukin 15

Cat. No. IL15-483H Lot. No. (See product label)

SPECIFICATION

Product Overview	Recombinant human IL-15 produced in E.coli is a single, non-glycosylated polypeptide chain containing 114 amino acids and having a molecular mass of 12,773.5 Daltons.
Species	Human
Source	E.coli
Description	Interleukin 15 (IL-15) is a pleiotropic pro-inflammatory cytokine that promotes activation of T cells, neutrophils and macrophages, and is critical to dendritic cell function in several model systems. IL-15 has been shown to play a role in several inflammatory disorders, including rheumatoid arthritis, psoriasis and pulmonary inflammatory diseases. Emerging data suggest that IL-15 may serve as a good therapeutic target as there appears to be a beneficial effect of IL-15 neutralization in models of psoriasis and diabetes.
Form	Recombinant IL-15 was lyophilized from a concentrated (1mg/ml) solution with 5mM Tris pH 8.0.
Purity	Purity Greater than 98% as determined by: Analysis by RP-HPLC. Reducing and non-reducing SDS-PAGE.
Bio-activity	Recombinant IL-15 is fully biologically active when compared to standards. The ED50, as determined by the dose-dependant stimulation of the proliferation of mouse CTLL-2 cells, was found to be < 0.5 ng/ml.

 Tel: 1-631-559-9269 1-516-512-3133

 Email: info@creative-biomart.com  Fax: 1-631-938-8127

 45-1 Ramsey Road, Shirley, NY 11967, USA

Physical Appearance	Sterile Filtered white lyophilized (freeze-dried) powder.
Solubility	It is recommended to reconstitute the lyophilized product with sterile water at a concentration of 0.1 mg/ml, which can be further diluted into other aqueous solutions.
Purity Greater than 98% as determined by	Analysis by RP-HPLC. Reducing and non-reducing SDS-PAGE.
Protein Content determined by	UV spectroscopy at 280 nm. Analysis by RP-HPLC calibrated against a known standard. Quantitation on SDS-PAGE against a known standard.
Endotoxin Level	Endotoxin level as measured by LAL is <0.01ng/ug or <0.1EU/ug.
Amino acid sequence	MNWWNVISDL KKIEDLIQSM HIDATLYTES DVHPSCKVTA MKCFLELQV ISLESGDASI HDTVENLIIL ANNSLSSNGN VTESGCKECE ELEEKNIKEF LQSFVHIVQM FINTS
Storage	Lyophilized product is very stable at -20 °C. Reconstituted material should be aliquoted and frozen at -20°C. It is recommended that a carrier protein (0.1% HSA or BSA) is added to the sample for long term storage.
Pathways	Cytokine-cytokine receptor interaction; Jak-STAT signaling pathway

GENE INFORMATION

Gene Name	IL15 interleukin 15 [Homo sapiens]
Official Symbol	IL15
Synonyms	IL15; interleukin 15; IL-15; MGC9721; OTTHUMP00000164617

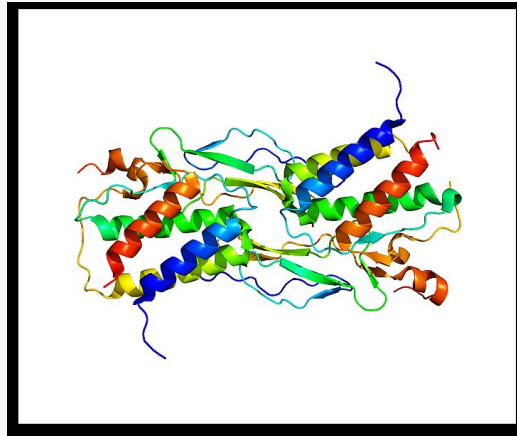
 Tel: 1-631-559-9269 1-516-512-3133

 Email: info@creative-biomart.com  Fax: 1-631-938-8127

 45-1 Ramsey Road, Shirley, NY 11967, USA

Gene ID	3600
mRNA Refseq	NM_000585
Protein Refseq	NP_000576
MIM	600554
UniProt ID	P40933
Chromosome Location	4q31
Function	cytokine activity; cytokine receptor binding; protein binding; signal transducer activity

Rendering based on
PDB 2Z3Q.



 Tel: 1-631-559-9269 1-516-512-3133

 Email: info@creative-biomart.com  Fax: 1-631-938-8127

 45-1 Ramsey Road, Shirley, NY 11967, USA