

Recombinant Human IL15RA protein, hFc-tagged

Cat. No. IL15RA-1655H Lot. No. (See product label)

SPECIFICATION

Product Overview	Recombinant Human IL15RA protein(Q13261-1)(Ile31-Thr205), fused with C-terminal hFc tag, was expressed in HEK293.
Species	Human
Source	HEK293
ProteinLength	Ile31-Thr205
Tag	C-hFc
Form	Lyophilized from 0.22µm filtered solution in PBS (pH 7.4). Normally 5% trehalose is added as protectant before lyophilization.
Bio-activity	Immobilized Human IL-15, No Tag at 2ug/ml (100ul/Well) on the plate. Dose response curve for Human IL-15RA, hFc Tag with the EC50 of 24.0ng/ml determined by ELISA.
Molecular Mass	The protein has a predicted MW of 45.1 kDa. Due to glycosylation, the protein migrates to 70-80 kDa based on Tris-Bis PAGE result.
Endotoxin	Less than 1EU per µg by the LAL method.
Purity	> 95% as determined by Tris-Bis PAGE;> 95% as determined by HPLC

 Tel: 1-631-559-9269 1-516-512-3133

 Email: info@creative-biomart.com  Fax: 1-631-938-8127

 45-1 Ramsey Road, Shirley, NY 11967, USA

Storage Reconstituted protein stable at -80°C for 12 months, 4°C for 1 week. Use a manual defrost freezer and avoid repeated freeze-thaw cycles.

Reconstitution Centrifuge tubes before opening. Reconstituting to a concentration more than 100 µg/ml is recommended. Dissolve the lyophilized protein in distilled water.

GENE INFORMATION

Gene Name IL15RA interleukin 15 receptor, alpha [Homo sapiens]

Official Symbol IL15RA

Synonyms IL15RA; interleukin 15 receptor, alpha; interleukin-15 receptor subunit alpha; CD215; IL 15RA; MGC104179;

Gene ID 3601

mRNA Refseq NM_001243539

Protein Refseq NP_001230468

MIM 601070

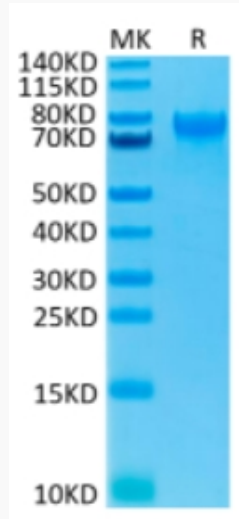
UniProt ID Q13261

 Tel: 1-631-559-9269 1-516-512-3133

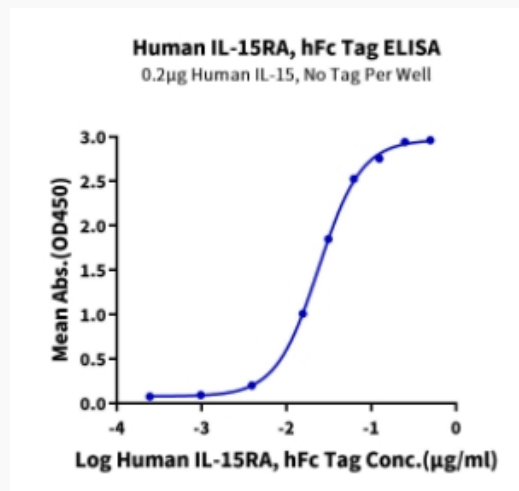
 Email: info@creative-biomart.com  Fax: 1-631-938-8127

 45-1 Ramsey Road, Shirley, NY 11967, USA

Tris-Bis PAGE



ELISA Data



 Tel: 1-631-559-9269 1-516-512-3133

 Email: info@creative-biomart.com  Fax: 1-631-938-8127

 45-1 Ramsey Road, Shirley, NY 11967, USA