

## Recombinant Human IL15RA Protein, hlgG-His-tagged

Cat. No. IL15RA-225H Lot. No. (See product label)

### SPECIFICATION

<b>Product Overview</b>	Recombinant Human IL15RA(31-205aa) fused with hlgG-His tag at C-terminal was expressed in Insect cells.
<b>Species</b>	Human
<b>Source</b>	Insect Cells
<b>ProteinLength</b>	31-205aa
<b>Description</b>	IL15RA, also known as interleukin-15 receptor subunit alpha isoform 1, is a high-affinity receptor for interleukin-15. It associates as a heterotrimer with the IL-2 receptor beta and gamma subunits to initiate signal transduction. This protein can signal both in cis and trans where IL15R from one subset of cells presents IL15 to neighboring IL2RG-expressing cells. IL15/IL15R alpha complexes can transmit reverse signaling that promotes cellular adhesion, tyrosine phosphorylation of intracellular proteins, and cytokine secretion by the IL 15/IL15R alpha expressing cells.
<b>Form</b>	Liquid. In Phosphate Buffered Saline (pH 7.4) containing 10% glycerol.
<b>Molecular Mass</b>	45.6kDa (417aa) 57-70KDa (SDS-PAGE under reducing conditions.)
<b>AA Sequence</b>	ADPITCPPPM SVEHADIWVK SYSLYSRERY ICNSGFKRKA GTSSLTECVL NKATNVAHW TTPSLKCIDRP ALVHQRPPAPP STVTTAGVTP QPESLSPSGK EPAASSPSSN NTAATTAIV PGSQLMPSKS PSTGTTEISS

 Tel: 1-631-559-9269 1-516-512-3133

 Email: [info@creative-biomart.com](mailto:info@creative-biomart.com)  Fax: 1-631-938-8127

 45-1 Ramsey Road, Shirley, NY 11967, USA

HESSHGTPSQ TTAKNWELTA SASHQPPGVY PQGHSDTTLE  
 PKSCDKTHTC PPCPAPELLG GPSVFLFPPK PKDTLMISRT PEVTCVVVDV  
 SHEDPEVKFN WYVDGVEVHN AKTKPREEQY NSTYRVVSVL  
 TVLHQDWLNG KEYKCKVSNK ALPAPIEKTI SKAKGQPREP QVYTLPPSRD  
 ELTKNQVSLT CLVKGFYPSD IAVEWESNGQ PENNYKTPP  
 VLDSGDSFFL YSKLTVDKSR WQQGNVFCSC VMHEALHNHY TQKSLSLSPG  
 KHHHHHH

**Purity** > 85% by SDS - PAGE

**Applications** SDS-PAGE

**Storage** Can be stored at +4 centigrade short term (1-2 weeks). For long term storage, aliquot and store at -20 centigrade or -70 centigrade. Avoid repeated freezing and thawing cycles.

**Concentration** 0.5 mg/ml (determined by Absorbance at 280)

## GENE INFORMATION

**Gene Name** [IL15RA interleukin 15 receptor, alpha \[ Homo sapiens \]](#)

**Official Symbol** [IL15RA](#)

**Synonyms** IL15RA; interleukin 15 receptor, alpha; interleukin-15 receptor subunit alpha; CD215; IL 15RA; MGC104179;

**Gene ID** [3601](#)

**mRNA Refseq** [NM\\_002189](#)

 Tel: 1-631-559-9269 1-516-512-3133

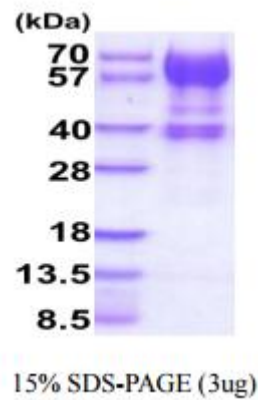
 Email: [info@creative-biomart.com](mailto:info@creative-biomart.com)  Fax: 1-631-938-8127

 45-1 Ramsey Road, Shirley, NY 11967, USA

**Protein Refseq** NP\_002180

**MIM** 601070

**UniProt ID** Q13261



 Tel: 1-631-559-9269 1-516-512-3133

 Email: [info@creative-biomart.com](mailto:info@creative-biomart.com)  Fax: 1-631-938-8127

 45-1 Ramsey Road, Shirley, NY 11967, USA