

## Recombinant Human IL15RA protein, His-Avi-tagged

Cat. No. IL15RA-273H Lot. No. (See product label)

### SPECIFICATION

<b>Product Overview</b>	Recombinant Human IL15R alpha Protein is expressed from mammalian with a His and Avi tag at the C-terminal. It contains Asp 21 - Glu 335.
<b>Species</b>	Human
<b>Source</b>	HEK293
<b>ProteinLength</b>	It contains Asp 21 - Glu 335.
<b>Description</b>	Interleukin-15 receptor alpha (IL-15R alpha) is a high affinity IL-15 binding protein that is crucial for mediating IL-15 functions such as memory CD8 T cell proliferation and NK, NK/T cell, and intestinal intraepithelial lymphocyte development.
<b>Form</b>	Supplied as 0.22um filtered solution in PBS (pH 7.4).
<b>Molecular Mass</b>	The protein has a predicted MW of 21.3 kDa. Due to glycosylation, the protein migrates to 50-70KDa based on Bis-Tris PAGE result.
<b>Endotoxin</b>	Less than 0.1EU per ug by the LAL method.
<b>Purity</b>	> 95% as determined by Bis-Tris PAGE; > 95% as determined by HPLC
<b>Storage</b>	The product should be stored at -70°C. Please do not repeated freeze-thaw cycles.
<b>Reconstitution</b>	It is recommended that sterile water be added to the vial to prepare a stock solution of

 Tel: 1-631-559-9269 1-516-512-3133

 Email: [info@creative-biomart.com](mailto:info@creative-biomart.com)  Fax: 1-631-938-8127

 45-1 Ramsey Road, Shirley, NY 11967, USA

0.2 ug/ul. Centrifuge the vial at 4°C before opening to recover the entire contents.

## GENE INFORMATION

**Gene Name** IL15RA interleukin 15 receptor, alpha [ Homo sapiens ]

**Official Symbol** IL15RA

**Synonyms** IL-15 R alpha;CD215;IL15RA;IL-15RA;IL-15R-alpha1

**Gene ID** 3601

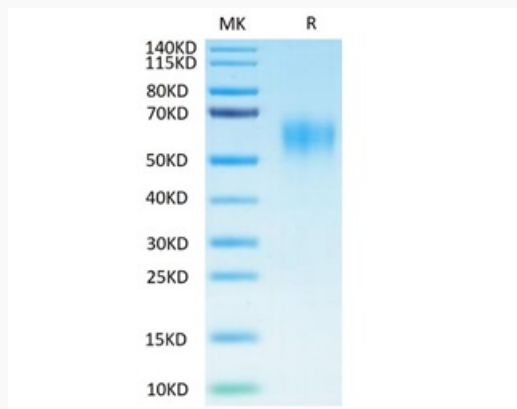
**mRNA Refseq** NM\_001243539

**Protein Refseq** NP\_001230468

**MIM** 601070

**UniProt ID** Q13261

### Tris-Bis PAGE

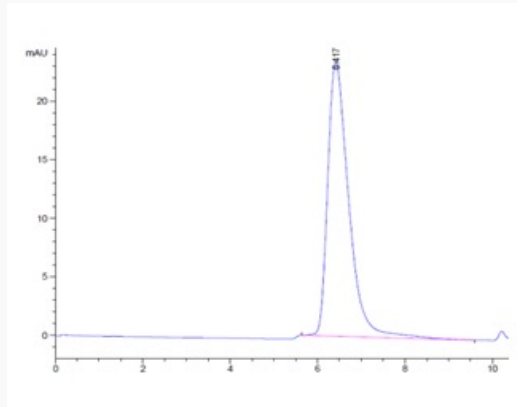


Tel: 1-631-559-9269 1-516-512-3133

Email: [info@creative-biomart.com](mailto:info@creative-biomart.com) Fax: 1-631-938-8127

45-1 Ramsey Road, Shirley, NY 11967, USA

HPLC data



 Tel: 1-631-559-9269 1-516-512-3133

 Email: [info@creative-biomart.com](mailto:info@creative-biomart.com)  Fax: 1-631-938-8127

 45-1 Ramsey Road, Shirley, NY 11967, USA