

Recombinant Human IL15RA protein, His-Avi-tagged, Biotinylated

Cat. No. IL15RA-273HB **Lot. No.** (See product label)

SPECIFICATION

Product Overview	Biotinylated Recombinant Human IL15R alpha Protein is expressed from mammalian with a His and Avi tag at the C-terminal. It contains Asp 21 - Glu 335.
Species	Human
Source	HEK293
ProteinLength	It contains Asp 21 - Glu 335.
Description	Interleukin-15 receptor alpha (IL-15R alpha) is a high affinity IL-15 binding protein that is crucial for mediating IL-15 functions such as memory CD8 T cell proliferation and NK, NK/T cell, and intestinal intraepithelial lymphocyte development.
Form	Supplied as 0.22um filtered solution in PBS (pH 7.4).
Molecular Mass	The protein has a predicted MW of 21.3 kDa. Due to glycosylation, the protein migrates to 50- 70KDa based on Bis-Tris PAGE result.
Endotoxin	Less than 0.1EU per ug by the LAL method.
Purity	> 95% as determined by Tris-Bis PAGE; > 95% as determined by HPLC
Storage	The product should be stored at -70°C. Please do not repeated freeze-thaw cycles.

 Tel: 1-631-559-9269 1-516-512-3133

 Email: info@creative-biomart.com  Fax: 1-631-938-8127

 45-1 Ramsey Road, Shirley, NY 11967, USA

Reconstitution	It is recommended that sterile water be added to the vial to prepare a stock solution of 0.2 ug/ul. Centrifuge the vial at 4°C before opening to recover the entire contents.
-----------------------	---

Conjugation	Biotin
--------------------	--------

GENE INFORMATION

Gene Name	IL15RA interleukin 15 receptor, alpha [Homo sapiens]
------------------	--

Official Symbol	IL15RA
------------------------	--------

Synonyms	IL-15 R alpha;CD215;IL15RA;IL-15RA;IL-15R-alpha1
-----------------	--

Gene ID	3601
----------------	------

mRNA Refseq	NM_001243539
--------------------	--------------

Protein Refseq	NP_001230468
-----------------------	--------------

MIM	601070
------------	--------

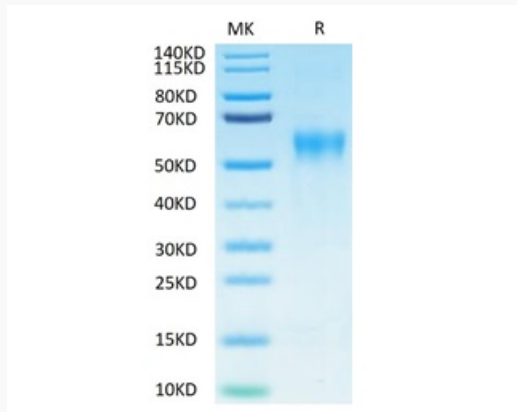
UniProt ID	Q13261
-------------------	--------

 Tel: 1-631-559-9269 1-516-512-3133

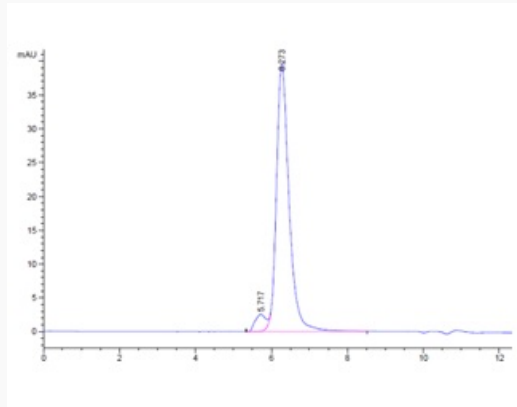
 Email: info@creative-biomart.com  Fax: 1-631-938-8127

 45-1 Ramsey Road, Shirley, NY 11967, USA

Tris-Bis PAGE



HPLC data



 Tel: 1-631-559-9269 1-516-512-3133

 Email: info@creative-biomart.com  Fax: 1-631-938-8127

 45-1 Ramsey Road, Shirley, NY 11967, USA