

Active Recombinant Human IL15RA Homodimer Protein, His&Avi tagged

Cat. No. IL15RA-49H Lot. No. (See product label)

SPECIFICATION

Product Overview	IL-15R α dimer protein contains an IL-15R α extracellular domain (UniProt# Q13261) fused with a dimer motif followed by a tandem His-Avi tag at the C-terminus was expressed in HEK293T.
Species	Human
Source	HEK293T
ProteinLength	31-205 aa
Description	<p>Human interleukin 15 receptor alpha subunit (IL-15Rα) is a transmembrane cytokine receptor. IL-15Rα is also known as IL-15Ra, IL15Ra, cluster of differentiation 215 (CD215), and interleukin 15 receptor subunit alpha. IL-15Rα contains an extracellular domain with a single sushi domain (short consensus repeat or complement control protein repeat), which is essential for interleukin 15 (IL-15) binding and IL-15Rα function, a linker/hinge region, and a membrane-proximal proline-threonine-rich region followed by a transmembrane domain, and cytoplasmic domain. IL-15Rα can homodimerize as well as heterodimerize with IL-2Rβ/CD122 and IL-2Rγ/CD132. IL-15Rα specifically binds IL-15 with very high affinity and is capable of binding IL-15 independently of other subunits. IL-15 stimulations of NK cells and T-cells has been shown to sustain long-lasting antitumor immunity, making IL-15Rα an attractive therapeutic target for immunotherapies.</p>

 Tel: 1-631-559-9269 1-516-512-3133

 Email: info@creative-biomart.com  Fax: 1-631-938-8127

 45-1 Ramsey Road, Shirley, NY 11967, USA

Molecular Mass	57 kDa
Purity	Greater than 90% dimer form as determined by SDS-PAGE under non-reducing condition
Application	Verified Applications: ELISA for IL-15R α -specific antibody and interleukin 15 (IL-15) ligand protein binding assays. Suggested Applications: SPR & BLI for IL-15R α -specific antibody and IL-15 protein binding assays. Animal immunization, RUO.
Storage	Store at -80 centigrade.
Storage Buffer	0.22 μ m filtered PBS, pH 7.4
Shipping	Frozen Dry Ice

GENE INFORMATION

Gene Name	IL15RA interleukin 15 receptor, alpha [Homo sapiens (human)]
Official Symbol	IL15RA
Synonyms	IL15RA; interleukin 15 receptor, alpha; interleukin-15 receptor subunit alpha; CD215; IL 15RA; MGC104179;
Gene ID	3601
mRNA Refseq	NM_001243539
Protein Refseq	NP_001230468
MIM	601070

 Tel: 1-631-559-9269 1-516-512-3133

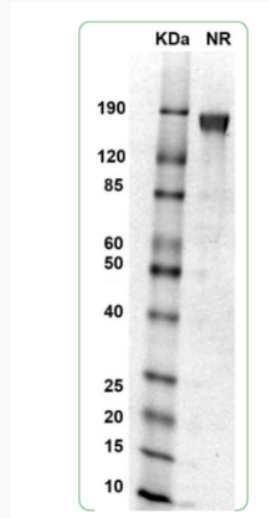
 Email: info@creative-biomart.com  Fax: 1-631-938-8127

 45-1 Ramsey Road, Shirley, NY 11967, USA

UniProt ID

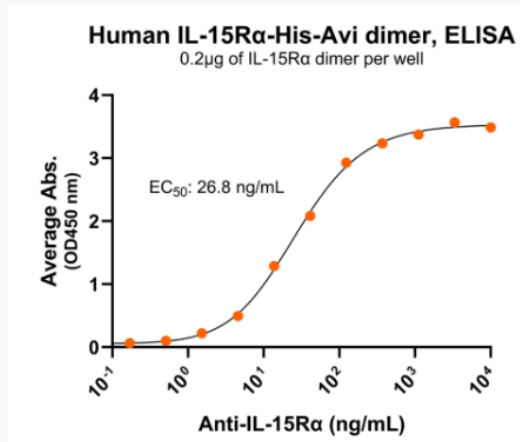
Q13261

SDS-PAGE and WB



MW: Molecular Weight marker reduced condition NR: IL-15Rα dimer under non-reduced condition

Bioactivity-Antibody Binding



Immobilized human IL-15Rα dimer protein, His-Avi tag at 2 μg/mL (100 μL/well) can

Tel: 1-631-559-9269 1-516-512-3133

Email: info@creative-biomart.com Fax: 1-631-938-8127

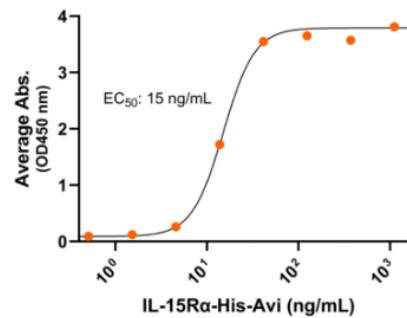
45-1 Ramsey Road, Shirley, NY 11967, USA

bind anti-human IL-15R α monoclonal antibody, with half maximal effective concentration (EC₅₀) range of 13.4-53.6 μ g/mL (QC tested).

**Bioactivity-Ligand
Binding**

Human IL-15R α -His-Avi dimer with IL-15, ELISA

0.2 μ g of IL-15 per well



Immobilized human IL-15 at 2 μ g/mL (100 μ L/well) can bind human IL-15R α dimer protein, His-Avi tag, with half maximal effective concentration (EC₅₀) range of 7.5-30.1 μ g/mL (QC tested).

Tel: 1-631-559-9269 1-516-512-3133

Email: info@creative-biomart.com Fax: 1-631-938-8127

45-1 Ramsey Road, Shirley, NY 11967, USA