

Recombinant Full Length Human IL16 Protein, C-Flag-tagged

Cat. No. IL16-1322HFL Lot. No. (See product label)

SPECIFICATION

Product Overview	Recombinant Full Length Human IL16 Protein, fused to Flag-tag at C-terminus, was expressed in Mammalian cells.
Species	Human
Source	Mammalian Cells
Description	The protein encoded by this gene is a pleiotropic cytokine that functions as a chemoattractant, a modulator of T cell activation, and an inhibitor of HIV replication. The signaling process of this cytokine is mediated by CD4. The product of this gene undergoes proteolytic processing, which is found to yield two functional proteins. The cytokine function is exclusively attributed to the secreted C-terminal peptide, while the N-terminal product may play a role in cell cycle control. Caspase 3 is reported to be involved in the proteolytic processing of this protein. Alternate splicing results in multiple transcript variants.
Form	25 mM Tris HCl, pH 7.3, 100 mM glycine, 10% glycerol.
Molecular Mass	66.5 kDa
AA Sequence	MDYSFDTTAEDPWVRISDCIKNLFSPIMSENHGHMPLQPNASLNEEEEGTQGHPDGT PPKLDTANGTPKVY KSADSSTVKKGPPVAPKPAWFRQSLKGLRNRASDPRGLPDP ALSTQPAPASREHLGSHIRASSSSSSIRQ RISSFETFSSQLPDKGAQRSLQSPSSG EAAKPLGKHEEGRFSGLLGRGAAPTLVPQQPEQVLSSGSPAA SEARDPGVSESP PGRQPNQKTLPPGPDLLRLLSTQAEESQGPVLKMPQSQRARSFPLTRSQSCETKLL

 Tel: 1-631-559-9269 1-516-512-3133

 Email: info@creative-biomart.com  Fax: 1-631-938-8127

 45-1 Ramsey Road, Shirley, NY 11967, USA

D EKTSKLYSISSQVSSAVMKSLCLPSSISCAQTPCIPKEGASPTSSSNEDSAANGS
 AETSALDTGFSNL SELREYTEGLTEAKEDDDGDHSSLQSGQSVISLLSSEELKKLIE
 EVKVLDEATLKQLDGIHVTLHKEEG AGLGFSLAGGADLENKVITVHRVFPNGLASQ
 EGTIQKGVNLSINGKSLKGTTHHDALAILRQAREPRQA VIVTRKLTPEAMPDLNSST
 DSAASASAASDVSVESTAEATVCTVTLEKMSAGLGFSLGEGGKSLHGDKPL TINRIF
 KGAASEQSETVQPGDEILQLGGTAMQGLTRFEAWNIKALPDGPVTIVIRRKSLQSKE
 TTAAGD
 STRTRPLEQKLISEEDLAANDILDYKDDDDKV

Purity	> 80% as determined by SDS-PAGE and Coomassie blue staining.
Stability	Stable for 12 months from the date of receipt of the product under proper storage and handling conditions. Avoid repeated freeze-thaw cycles.
Storage	Store at -80 centigrade.
Concentration	>50 ug/mL as determined by microplate BCA method.
Preparation	Recombinant protein was captured through anti-DDK affinity column followed by conventional chromatography steps.
Protein Families	Druggable Genome, Secreted Protein
Full Length	Full L.

GENE INFORMATION

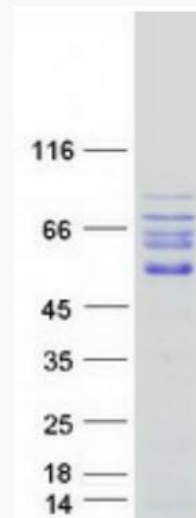
Gene Name	IL16 interleukin 16 [Homo sapiens (human)]
Official Symbol	IL16

 Tel: 1-631-559-9269 1-516-512-3133

 Email: info@creative-biomart.com  Fax: 1-631-938-8127

 45-1 Ramsey Road, Shirley, NY 11967, USA

Synonyms	LCF; NIL16; PRIL16; prIL-16
Gene ID	3603
mRNA Refseq	NM_004513.6
Protein Refseq	NP_004504.3
MIM	603035
UniProt ID	Q9UME6



Coomassie blue staining of purified IL16 protein.

 Tel: 1-631-559-9269 1-516-512-3133

 Email: info@creative-biomart.com  Fax: 1-631-938-8127

 45-1 Ramsey Road, Shirley, NY 11967, USA