

Recombinant Human IL16 Protein (Met1203-Ser1332), C-His tagged, Animal-free, Carrier-free

Cat. No. IL16-181H Lot. No. (See product label)

SPECIFICATION

Product Overview	Recombinant Human IL16 Protein (Met1203-Ser1332) with C-His tag was expressed in E. coli and Animal-free as well as Carrier-free.
Species	Human
Source	E.coli
ProteinLength	Met1203-Ser1332
Description	Interleukin 16(IL-16) predicts a molecular mass of 13.5 kDa, encoded by this gene is a pleiotropic cytokine that functions as a chemoattractant, a modulator of T cell activation, and an inhibitor of HIV replication, and signaling process of this cytokine is mediated by CD4.
Form	Lyophilized
Molecular Mass	The protein has a calculated MW of 14.12 kDa. The protein migrates as 18 kDa under reducing condition (SDS-PAGE analysis).
Endotoxin	< 0.1 EU/μg of the protein by the LAL method.
Purity	>95% as determined by SDS-PAGE analysis.
Storage	This product is stable after storage at:

 Tel: 1-631-559-9269 1-516-512-3133

 Email: info@creative-biomart.com  Fax: 1-631-938-8127

 45-1 Ramsey Road, Shirley, NY 11967, USA

-20 centigrade for 12 months in lyophilized state from date of receipt.
 -20 or -80 centigrade for 1 month under sterile conditions after reconstitution.
 Avoid repeated freeze/thaw cycles.

Storage Buffer Lyophilized from a 0.2 µm filtered solution of PBS, pH 8.0.

Reconstitution It is recommended to reconstitute the lyophilized protein in sterile H₂O to a concentration not less than 200 µg/mL and incubate the stock solution for at least 20 min to ensure sufficient re-dissolved.

Shipping The product is shipped with polar packs. Upon receipt, store it immediately at -20 centigrade or lower for long term storage.

GENE INFORMATION

Gene Name IL16 interleukin 16 [Homo sapiens (human)]

Official Symbol IL16

Synonyms IL16; interleukin 16; interleukin 16 (lymphocyte chemoattractant factor); pro-interleukin-16; FLJ16806; FLJ42735; HsT19289; IL 16; LCF; lymphocyte chemoattractant factor; prIL 16; prointerleukin 16; neuronal interleukin 16; NIL16; PRIL16; prIL-16; FLJ44234;

Gene ID 3603

mRNA Refseq NM_001172128

Protein Refseq NP_001165599

MIM 603035

 Tel: 1-631-559-9269 1-516-512-3133

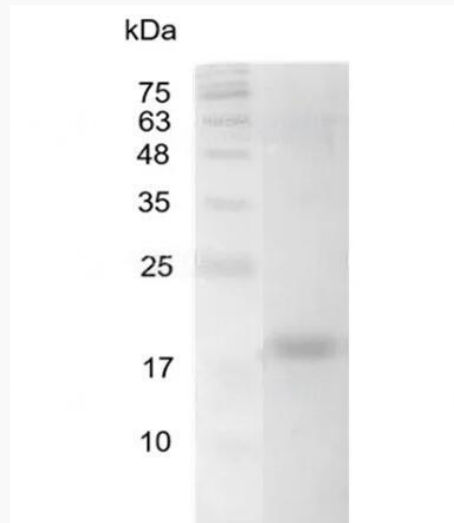
 Email: info@creative-biomart.com  Fax: 1-631-938-8127

 45-1 Ramsey Road, Shirley, NY 11967, USA

UniProt ID

Q14005

**SDS-PAGE analysis
of recombinant
human IL-16 (aa 2-
130).**



 Tel: 1-631-559-9269 1-516-512-3133

 Email: info@creative-biomart.com  Fax: 1-631-938-8127

 45-1 Ramsey Road, Shirley, NY 11967, USA