

Recombinant Human interleukin 16 Protein, His tagged

Cat. No. IL16-253H Lot. No. (See product label)

SPECIFICATION

Product Overview Recombinant human IL-16 protein (Q14005-1) (Met 1203-Ser 1332) with a His tag at the C-terminus was expressed in HEK293.

Species Human

Source HEK293

ProteinLength 1203-1332aa

Description The cytokine encoded by this gene is a pleiotropic cytokine that functions as a chemoattractant, a modulator of T cell activation, and an inhibitor of HIV replication. The signaling process of this cytokine is mediated by CD4. The product of this gene undergoes proteolytic processing, which is found to yield two functional proteins. The cytokine function is exclusively attributed to the secreted C-terminal peptide, while the N-terminal product may play a role in cell cycle control. Caspase 3 is reported to be involved in the proteolytic processing of this protein. Two alternatively spliced transcript variants encoding distinct isoforms have been reported. Interleukin 16 (IL-16) is released by a variety of cells (including lymphocytes and some epithelial cells) that has been characterized as a chemoattractant for certain immune cells expressing the cell surface molecule CD4. IL-16 was originally described as a factor that could attract activated T cells in humans, it was previously called lymphocyte chemoattractant factor (LCF). Since then, this interleukin has been shown to recruit and activate many other cells expressing the CD4 molecule, including monocytes, eosinophils, and dendritic cells. The structure of IL-16 was determined following its

 Tel: 1-631-559-9269 1-516-512-3133

 Email: info@creative-biomart.com  Fax: 1-631-938-8127

 45-1 Ramsey Road, Shirley, NY 11967, USA

cloning in 1994. This cytokine is produced as a precursor peptide (pro-IL-16) that requires processing by an enzyme called caspase-3 to become active. CD4 is the cell signaling receptor for mature IL-16.

Tag C-His

Molecular Mass 14.8 kDa

Endotoxin Less than 1.0 EU/μg by the LAL method.

Purity >95% as determined by SDS-PAGE.

Storage Please avoid repeated freeze-thaw cycles. Samples are stable for up to twelve months from date of receipt at -20 to -80 centigrade. It is recommended that aliquot the reconstituted solution to minimize freeze-thaw cycles.

Storage Buffer Lyophilized from a 0.2 μm filtered solution of PBS, pH7.4, 5% Trehalose, 5% mannitol.

Reconstitution Reconstitute at 250 μg/mL in sterile water.

GENE INFORMATION

Gene Name IL16 interleukin 16 [Homo sapiens (human)]

Official Symbol IL16

Synonyms IL16; interleukin 16; interleukin 16 (lymphocyte chemoattractant factor); pro-interleukin-16; FLJ16806; FLJ42735; HsT19289; IL 16; LCF; lymphocyte chemoattractant factor; prIL 16; prointerleukin 16; neuronal interleukin 16; NIL16; PRIL16; prIL-16; FLJ44234;

 Tel: 1-631-559-9269 1-516-512-3133

 Email: info@creative-biomart.com  Fax: 1-631-938-8127

 45-1 Ramsey Road, Shirley, NY 11967, USA

Gene ID 3603

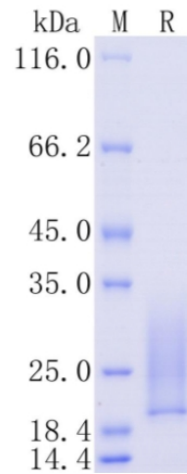
mRNA Refseq NM_001172128

Protein Refseq NP_001165599

MIM 603035

UniProt ID Q14005

Protein on SDS-PAGE under reducing (R) condition.



Tel: 1-631-559-9269 1-516-512-3133

Email: info@creative-biomart.com Fax: 1-631-938-8127

45-1 Ramsey Road, Shirley, NY 11967, USA