

## Active Recombinant Human IL16 protein, His-tagged

Cat. No. IL16-2586H Lot. No. (See product label)

### SPECIFICATION

<b>Product Overview</b>	Recombinant Human IL-16 Protein is produced by E. coli expression system. The target protein is expressed with sequence (Pro2-Ser130) of human IL-16 (Accession #NP_757366.2) fused with a 6xHis tag at the C-terminus.
<b>Species</b>	Human
<b>Source</b>	E.coli
<b>ProteinLength</b>	Pro2-Ser130
<b>Form</b>	Lyophilized from a 0.22 µm filtered solution of PBS, pH 7.4.
<b>Bio-activity</b>	Measured by its binding ability in a functional ELISA. Immobilized Recombinant human IL16 at 5 µg/mL (100 µL/well) can bind Recombinant human CD4 with a linear range of 0.2-1 µg/mL.
<b>Molecular Mass</b>	20 kDa
<b>Endotoxin</b>	< 0.1 EU/µg of the protein by LAL method.
<b>Purity</b>	> 97% by SDS-PAGE.
<b>Storage</b>	Store the lyophilized protein at -20°C to -80 °C for long term. After reconstitution, the protein solution is stable at -20 °C for 3 months, at 2-8 °C for up to 1 week.

 Tel: 1-631-559-9269 1-516-512-3133

 Email: [info@creative-biomart.com](mailto:info@creative-biomart.com)  Fax: 1-631-938-8127

 45-1 Ramsey Road, Shirley, NY 11967, USA

**Reconstitution** Reconstitute to a concentration of 0.1-0.5 mg/mL in sterile distilled water.

## GENE INFORMATION

**Gene Name** IL16 interleukin 16 [ Homo sapiens ]

**Official Symbol** IL16

**Synonyms** IL16; interleukin 16; interleukin 16 (lymphocyte chemoattractant factor); pro-interleukin-16; FLJ16806; FLJ42735; HsT19289; IL 16; LCF; lymphocyte chemoattractant factor; prIL 16; prointerleukin 16; neuronal interleukin 16; NIL16; PRIL16; prIL-16; FLJ44234;

**Gene ID** 3603

**mRNA Refseq** NM\_001172128

**Protein Refseq** NP\_001165599

**MIM** 603035

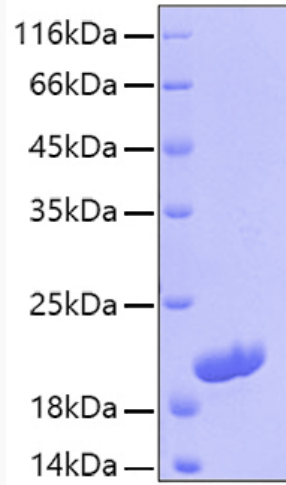
**UniProt ID** Q14005

 Tel: 1-631-559-9269 1-516-512-3133

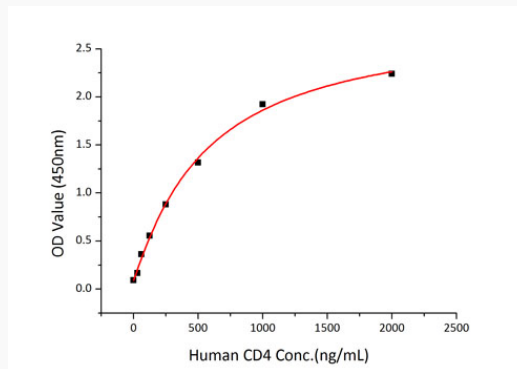
 Email: [info@creative-biomart.com](mailto:info@creative-biomart.com)  Fax: 1-631-938-8127

 45-1 Ramsey Road, Shirley, NY 11967, USA

**SDS-PAGE**



**Bio-activity**



 Tel: 1-631-559-9269 1-516-512-3133

 Email: [info@creative-biomart.com](mailto:info@creative-biomart.com)  Fax: 1-631-938-8127

 45-1 Ramsey Road, Shirley, NY 11967, USA