

Recombinant Human IL16 Protein (Pro1204-Ser1332), C-His tagged

Cat. No. IL16-2843H Lot. No. (See product label)

SPECIFICATION

Product Overview	Recombinant human IL16 (Pro1204-Ser1332) protein fused with the C-terminal His tag was expressed in E. coli.
Species	Human
Source	E.coli
ProteinLength	Pro1204-Ser1332
Molecular Mass	14.3 kDa
Purity	>90 % as determined by SDS-PAGE.
Notes	For research use only.
Storage	Use a manual defrost freezer and avoid repeated freeze thaw cycles. Store at 2 to 8 centigrade for one week. Store at -20 to -80 centigrade for twelve months from the date of receipt.
Storage Buffer	Supplied as solution form in PBS or lyophilized from PBS.
Reconstitution	Reconstitute in sterile water for a stock solution.
Shipping	In general, proteins are provided as lyophilized powder/frozen liquid. They are

 Tel: 1-631-559-9269 1-516-512-3133

 Email: info@creative-biomart.com  Fax: 1-631-938-8127

 45-1 Ramsey Road, Shirley, NY 11967, USA

shipped out with dry ice/blue ice unless customers require otherwise.

GENE INFORMATION

Gene Name IL16 interleukin 16 [Homo sapiens (human)]

Official Symbol IL16

Synonyms IL16; interleukin 16; interleukin 16 (lymphocyte chemoattractant factor); pro-interleukin-16; FLJ16806; FLJ42735; HsT19289; IL 16; LCF; lymphocyte chemoattractant factor; prIL 16; prointerleukin 16; neuronal interleukin 16; NIL16; PRIL16; prIL-16; FLJ44234;

Gene ID 3603

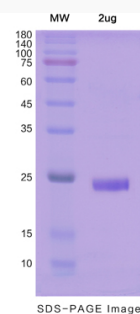
mRNA Refseq NM_001172128

Protein Refseq NP_001165599

MIM 603035

UniProt ID Q14005

SDS-PAGE



 Tel: 1-631-559-9269 1-516-512-3133

 Email: info@creative-biomart.com  Fax: 1-631-938-8127

 45-1 Ramsey Road, Shirley, NY 11967, USA