

## Recombinant Human IL16 protein(1211-1330 aa), C-His-tagged

Cat. No. IL16-2865H Lot. No. (See product label)

### SPECIFICATION

<b>Product Overview</b>	Recombinant Human IL16 protein(Q14005)(1211-1330 aa), fused with C-terminal His tag, was expressed in E. coli.
<b>Species</b>	Human
<b>Source</b>	E.coli
<b>ProteinLength</b>	1211-1330 aa
<b>Form</b>	0.15 M Phosphate buffered saline
<b>Molecular Mass</b>	15 kDa
<b>Storage</b>	Shipped on dry ice. Avoid repeated freeze-thaw cycles. Upon receipt, 2 days when stored at 2 to 8 °C after thawing. Up to 12 months when aliquoted and stored at -20 to -80°C.
<b>Reconstitution</b>	It is recommended that sterile water be added to the vial to prepare a stock solution of 0.2 ug/ul. Centrifuge the vial at 4°C before opening to recover the entire contents.
<b>AA Sequence</b>	DSAASASAASDVSVESTAEATVCTVTLEKMSAGLGFSLEGGKGS LHGDKPLTINRIF KGAASEQSETVQPGDEILQLGGTAMQGLTRFEAWNIKALPDGPVTIVIRRKSLQSKE TTAAG

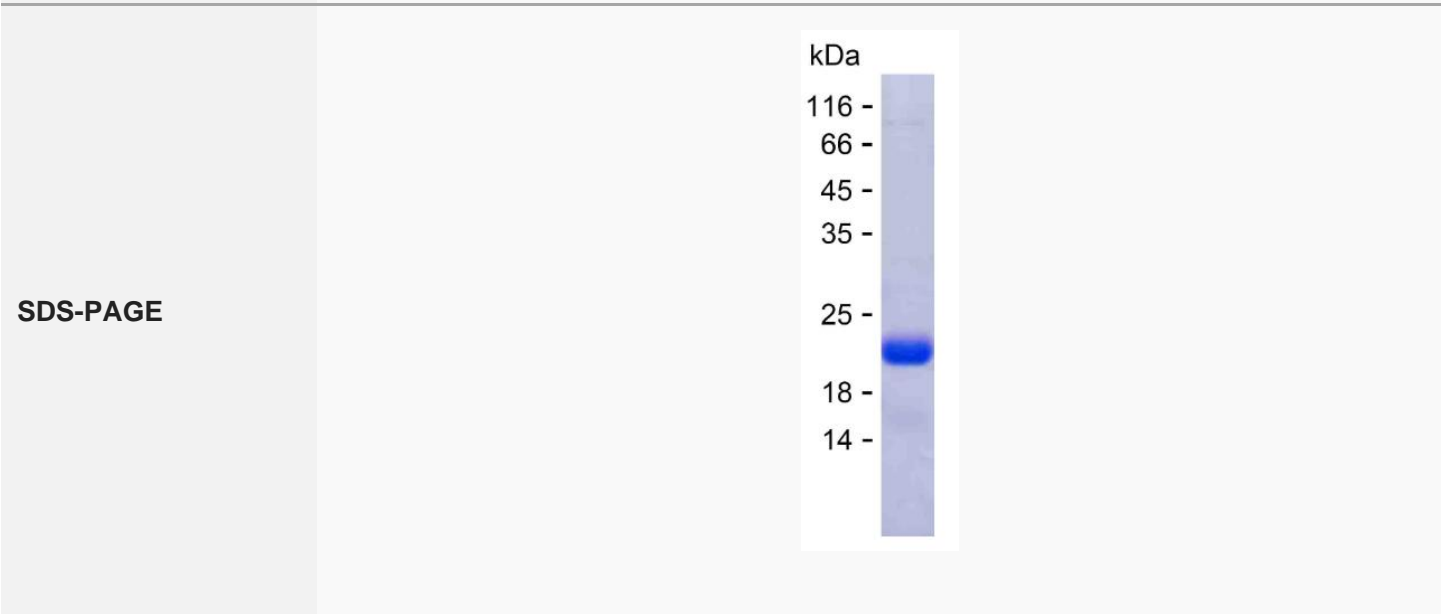
### GENE INFORMATION

 Tel: 1-631-559-9269 1-516-512-3133

 Email: [info@creative-biomart.com](mailto:info@creative-biomart.com)  Fax: 1-631-938-8127

 45-1 Ramsey Road, Shirley, NY 11967, USA

<b>Gene Name</b>	IL16 interleukin 16 [ Homo sapiens ]
<b>Official Symbol</b>	IL16
<b>Synonyms</b>	IL16; interleukin 16; interleukin 16 (lymphocyte chemoattractant factor); pro-interleukin-16; FLJ16806; FLJ42735; HsT19289; IL 16; LCF; lymphocyte chemoattractant factor; prIL 16; prointerleukin 16; neuronal interleukin 16; NIL16; PRIL16; prIL-16; FLJ44234;
<b>Gene ID</b>	3603
<b>mRNA Refseq</b>	NM_001172128
<b>Protein Refseq</b>	NP_001165599
<b>MIM</b>	603035
<b>UniProt ID</b>	Q14005



Tel: 1-631-559-9269 1-516-512-3133

Email: [info@creative-biomart.com](mailto:info@creative-biomart.com) Fax: 1-631-938-8127

45-1 Ramsey Road, Shirley, NY 11967, USA