

Active GMP Recombinant Human IL16 protein

Cat. No. IL16-4330HG Lot. No. (See product label)

SPECIFICATION

Product Overview	Recombinant Human IL16 was produced in E. coli using non-animal reagents in an animal-free facility under cGMP guidelines.
Species	Human
Source	E.coli
Description	Human Interleukin-16 (IL-16) is also called lymphocyte chemoattractant factor (LCF) and it has three isoforms which are cleaved from pre-Interleukin-16. IL-16 is mostly secreted by lymphocytes, epithelial cells, eosinophils, and CD8+ T cells. It has many functions including induction of the IL-2R α on T cells, suppression of human immunodeficiency virus (HIV) replication, inhibition of T-cell antigen receptor/CD3 mediated T-cell stimulation in mixed lymphocyte reactions and so on. It signals through CD4 receptor. Furthermore, recombinant human IL-16 (130 a.a.) contains 130 amino acid residues and it shares 85 % a.a. sequence identity with murine IL-16.
Form	Lyophilized from a 0.2 μ n filtered concentrated solution in 20 mM Tris, 150 mM NaCl, pH 7.0.
Bio-activity	Fully biologically active when compared to standard. The biological activity determined by a chemotaxis bioassay using human CD4+ T Lymphocytes is in a concentration range of 1.0-100 ng/ml.
Molecular Mass	Approximately 13.4 kDa, a single non-glycosylated polypeptide chain containing 130 amino acids.

 Tel: 1-631-559-9269 1-516-512-3133

 Email: info@creative-biomart.com  Fax: 1-631-938-8127

 45-1 Ramsey Road, Shirley, NY 11967, USA

AA Sequence	MPDLNSSTDSAASASAASDVSVESTAEATVCTVTLEKMSAGLGFSLGGKGS LHGD KPLTINRIFKGAASEQSETVQPGDEILQLGGTAMQGLTRFEAWNIKALPDGPVTIVIR RKSLQSKETTAAGDS
Endotoxin	Less than 1 EU/g of rHuIL-16, 130 a.a. as determined by LAL method.
Purity	> 95 % by SDS-PAGE and HPLC analyses.
Storage	This lyophilized preparation is stable at 2-8 centigrade, but should be kept at -20 centigrade for long term storage, preferably desiccated. Upon reconstitution, the preparation is stable for up to one week at 2-8 centigrade. For maximal stability, apportion the reconstituted preparation into working aliquots and store at -20 centigrade to -70 centigrade. Avoid repeated freeze/thaw cycles.
Reconstitution	Reconstitute in sterile distilled water or aqueous buffer containing 0.1 % BSA to a concentration of 0.1-1.0 mg/mL. Stock solutions should be apportioned into working aliquots and stored at ≤ -20 centigrade. Further dilutions should be made in appropriate buffered solutions.
Quality Statement	Our GMP proteins are produced according to relevant sections of the following documents: WHO TRS, No. 822, 1992 Annex 1, Good Manufacturing Practices for Biological Products; USP Chapter 1043, Ancillary Materials for Cell, Gene and Tissue-Engineered Products and USP Chapter 92, Growth Factors and Cytokines Used in Cell Therapy Manufacturing.
Shipping	The product is shipped at ambient temperature. Upon receipt, store it immediately at the recommended temperature.

GENE INFORMATION

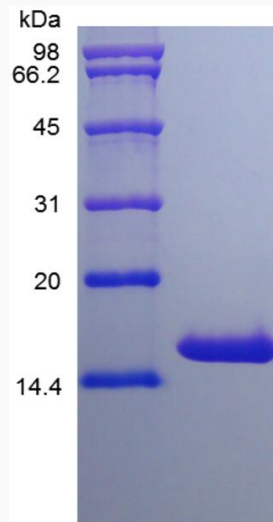
Gene Name IL16 interleukin 16 [Homo sapiens (human)]

 Tel: 1-631-559-9269 1-516-512-3133

 Email: info@creative-biomart.com  Fax: 1-631-938-8127

 45-1 Ramsey Road, Shirley, NY 11967, USA

Official Symbol	IL16
Synonyms	LCF; NIL16; PRIL16; prIL-16; Interleukin-16 isoform 2, Lymphocyte chemoattractant factor, LCF
Gene ID	3603
mRNA Refseq	NM_172217.3
Protein Refseq	NP_757366.2
MIM	603035
UniProt ID	Q14005



 Tel: 1-631-559-9269 1-516-512-3133

 Email: info@creative-biomart.com  Fax: 1-631-938-8127

 45-1 Ramsey Road, Shirley, NY 11967, USA