

Recombinant Human IL16 protein

Cat. No. IL16-503H **Lot. No.** (See product label)

SPECIFICATION

Product Overview	Recombinant Human IL16 protein (121 a.a.) was expressed in Escherichia coli.
Species	Human
Source	E.coli
ProteinLength	121
Description	Human Interleukin-16 (IL-16) is also called lymphocyte chemoattractant factor (LCF) and it has three isoforms which are cleaved from pre-Interleukin-16. IL-16 is mostly secreted by lymphocytes, epithelial cells, eosinophils, and CD8+ T cells. It has many functions including induction of the IL-2R α on T cells, suppression of human immunodeficiency virus (HIV) replication, inhibition of T-cell antigen receptor/CD3 mediated T-cell stimulation in mixed lymphocyte reactions and so on. It signals through CD4 receptor. Furthermore, recombinant human IL-16 (121 a.a.) contains 121 amino acid residues and it shares 85 % a.a. sequence identity with murine IL-16.
Form	Lyophilized from a 0.2 μ m filtered concentrated solution in PBS, pH 7.4.
Bio-activity	Fully biologically active when compared to standard. The biological activity determined by a chemotaxis bioassay using human peripheral T Lymphocytes is in a concentration range of 50-500 ng/ml.
Molecular Mass	Approximately 12.4 kDa, a single non-glycosylated polypeptide chain containing 121 amino acids.

 Tel: 1-631-559-9269 1-516-512-3133

 Email: info@creative-biomart.com  Fax: 1-631-938-8127

 45-1 Ramsey Road, Shirley, NY 11967, USA

AA Sequence	SAASASAASDVSVESTAEATVCTVTLEKMSAGLGFSLGEGGKGSLSHGDKPLTINRIFK GAASEQSETVQPGDEILQLGGTAMQGLTRFEAWNIIKALPDGPVTIVIRRKSLQSKET TAAGDS
Endotoxin	Less than 1 EU/g of rHuIL-16, 121 a.a. as determined by LAL method.
Purity	>95% by SDS-PAGE and HPLC analysis.
Storage	Use a manual defrost freezer and avoid repeated freeze-thaw cycles. 12 months from date of receipt, -20 to -70 centigrade as supplied. 1 month, 2 to 8 centigrade under sterile conditions after reconstitution. 3 months, -20 to -70 centigrade under sterile conditions after reconstitution.
Reconstitution	We recommend that this vial be briefly centrifuged prior to opening to bring the contents to the bottom. Reconstitute in sterile distilled water or aqueous buffer containing 0.1 % BSA to a concentration of 0.1-1.0 mg/mL. Stock solutions should be apportioned into working aliquots and stored at ≤-20 centigrade. Further dilutions should be made in appropriate buffered solutions.
GENE INFORMATION	
Gene Name	IL16
Official Symbol	IL16
Synonyms	IL16; interleukin 16; interleukin 16 (lymphocyte chemoattractant factor); pro-interleukin-16; FLJ16806; FLJ42735; HsT19289; IL 16; LCF; lymphocyte chemoattractant factor; prIL 16; prointerleukin 16; neuronal interleukin 16; NIL16; PRIL16; prIL-16; FLJ44234;
Gene ID	3603

 Tel: 1-631-559-9269 1-516-512-3133

 Email: info@creative-biomart.com  Fax: 1-631-938-8127

 45-1 Ramsey Road, Shirley, NY 11967, USA

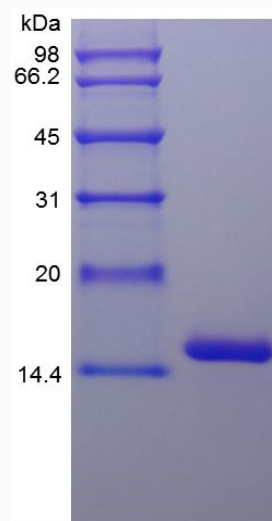
mRNA Refseq [NM_001172128](#)

Protein Refseq [NP_001165599](#)

MIM [603035](#)

UniProt ID [Q14005](#)

**SDS-PAGE of IL16-
503H**



 Tel: 1-631-559-9269 1-516-512-3133

 Email: info@creative-biomart.com  Fax: 1-631-938-8127

 45-1 Ramsey Road, Shirley, NY 11967, USA