

## Recombinant Human IL16 protein

**Cat. No.** IL16-504H    **Lot. No.** (See product label)

### SPECIFICATION

<b>Product Overview</b>	Recombinant Human IL16 protein (130 a.a.) was expressed in Escherichia coli.
<b>Species</b>	Human
<b>Source</b>	E.coli
<b>ProteinLength</b>	130
<b>Description</b>	Human Interleukin-16 (IL-16) is also called lymphocyte chemoattractant factor (LCF) and it has three isoforms which are cleaved from pre-Interleukin-16. IL-16 is mostly secreted by lymphocytes, epithelial cells, eosinophils, and CD8+ T cells. It has many functions including induction of the IL-2R $\alpha$ on T cells, suppression of human immunodeficiency virus (HIV) replication, inhibition of T-cell antigen receptor/CD3 mediated T-cell stimulation in mixed lymphocyte reactions and so on. It signals through CD4 receptor. Furthermore, recombinant human IL-16 (130 a.a.) contains 130 amino acid residues and it shares 85 % a.a. sequence identity with murine IL-16.
<b>Form</b>	Lyophilized from a 0.2 $\mu$ m filtered concentrated solution in 20 mM Tris, 150 mM NaCl, pH 7.0.
<b>Bio-activity</b>	Fully biologically active when compared to standard. The biological activity determined by a chemotaxis bioassay using human CD4+ T Lymphocytes is in a concentration range of 1.0-100 ng/ml.
<b>Molecular Mass</b>	Approximately 13.4 kDa, a single non-glycosylated polypeptide chain containing

 Tel: 1-631-559-9269    1-516-512-3133

 Email: [info@creative-biomart.com](mailto:info@creative-biomart.com)     Fax: 1-631-938-8127

 45-1 Ramsey Road, Shirley, NY 11967, USA

	130amino acids.
<b>AA Sequence</b>	MPDLNSSTDSAASASAASDVSVESTAEATVCTVTLEKMSAGLGFSLEGGKGS LHGD KPLTINRIFKGAASEQSETVQPGDEILQLGGTAMQGLTRFEAWNIIKALPDGPVTIVIR RKSLQSKETTAAGDS
<b>Endotoxin</b>	Less than 1 EU/g of rHuIL-16, 130 a.a. as determined by LAL method.
<b>Purity</b>	>95% by SDS-PAGE and HPLC analysis.
<b>Storage</b>	Use a manual defrost freezer and avoid repeated freeze-thaw cycles. 12 months from date of receipt, -20 to -70 centigrade as supplied. 1 month, 2 to 8 centigrade under sterile conditions after reconstitution. 3 months, -20 to -70 centigrade under sterile conditions after reconstitution.
<b>Reconstitution</b>	We recommend that this vial be briefly centrifuged prior to opening to bring the contents to the bottom. Reconstitute in sterile distilled water or aqueous buffer containing 0.1 % BSA to a concentration of 0.1-1.0 mg/mL. Stock solutions should be apportioned into working aliquots and stored at ≤-20 centigrade. Further dilutions should be made in appropriate buffered solutions.

## GENE INFORMATION

<b>Gene Name</b>	IL16
<b>Official Symbol</b>	IL16
<b>Synonyms</b>	IL16; interleukin 16; interleukin 16 (lymphocyte chemoattractant factor); pro-interleukin-16; FLJ16806; FLJ42735; HsT19289; IL 16; LCF; lymphocyte chemoattractant factor; prIL 16; prointerleukin 16; neuronal interleukin 16; NIL16; PRIL16; prIL-16; FLJ44234;

 Tel: 1-631-559-9269 1-516-512-3133

 Email: [info@creative-biomart.com](mailto:info@creative-biomart.com)  Fax: 1-631-938-8127

 45-1 Ramsey Road, Shirley, NY 11967, USA

**Gene ID** 3603

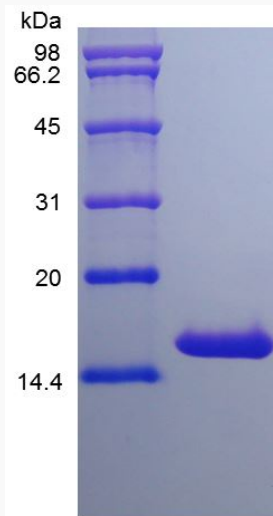
**mRNA Refseq** NM\_001172128

**Protein Refseq** NP\_001165599

**MIM** 603035

**UniProt ID** Q14005

**SDS-PAGE of IL16-504H**



 Tel: 1-631-559-9269 1-516-512-3133

 Email: [info@creative-biomart.com](mailto:info@creative-biomart.com)  Fax: 1-631-938-8127

 45-1 Ramsey Road, Shirley, NY 11967, USA