

Active Recombinant Human Interleukin 16

Cat. No. IL16-534H **Lot. No.** (See product label)

SPECIFICATION

Product Overview	Recombinant human IL16 was expressed in E. coli and purified by using conventional chromatography techniques.
Species	Human
Source	Human
Description	IL16 is a CD8+ T cell-derived cytokine that induces chemotaxis of CD4+ T cells and CD4+ monocytes and eosinophils. Analysis by gel filtration suggests that, under physiological conditions, hIL16 exists predominantly as a noncovalently linked multimer, but that some IL16 may exist as a monomer. However, only the multimeric form appears to possess chemotactic activity, suggesting that receptor cross-linking may be required for activity. IL16 also induces expression of IL2 receptor (IL2R) and MHC class II molecules on CD4 + T cells. Human and Mouse IL16 show significant cross-species reactivity.
Form	Supplied as a lyophilized powder.
Purity	>98% pure by SDS PAGE and HPLC
Sequence	Region of IL16 protein corresponding to amino acids SAASASAASD VSVESTAEAT VCTVTLEKMS AGLGFSLEGG KGSLHGDKPL TINRIFKGAA SEQSETVQPG DEILQLGGTA MQGLTRFEAW NIIKALPDGP VTIVIRRKSL QSKETTAAGD S.
Molecular Mass	13.5 kDa

 Tel: 1-631-559-9269 1-516-512-3133

 Email: info@creative-biomart.com  Fax: 1-631-938-8127

 45-1 Ramsey Road, Shirley, NY 11967, USA

Applications	Numerous applications are possible with this product and should be tested by the end user under their own laboratory conditions
Endotoxin Levels	Endotoxin level is less than 0.1 ng per ug (1 EU/ug).
Bioactivity	Determined by its ability to chemoattract human CD4+ T-lymphocytes using a concentration range of 50.0-100.0 ng/ml.
Storage	Store at 4 deg C for short term storage (1/2 weeks). Aliquot and store at -20 deg C or -70 deg C for long term storage. Avoid repeated freeze/thaw cycles.

GENE INFORMATION

Gene Name	IL16 interleukin 16 [Homo sapiens]
Official Symbol	IL16
Synonyms	IL16; FLJ16806; FLJ42735; FLJ44234; LCF; prIL-16; Interleukin-16; Lymphocyte Chemoattractant Factor; prIL-16; IL-16; HsT19289; interleukin-16 precursor; interleukin 16 (lymphocyte chemoattractant factor)
Gene ID	3603
mRNA Refseq	NM_004513
Protein Refseq	NP_004504
MIM	603035
UniProt ID	Q14005

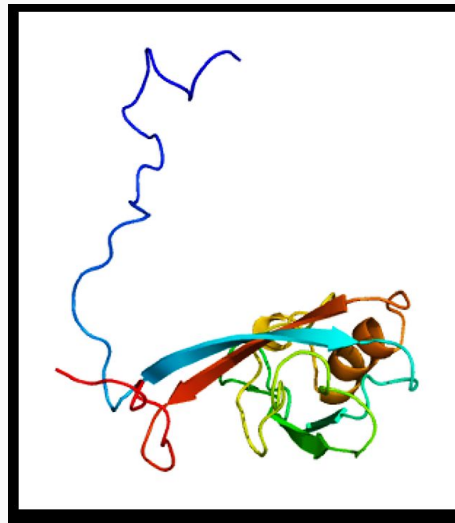
 Tel: 1-631-559-9269 1-516-512-3133


 Email: info@creative-biomart.com  Fax: 1-631-938-8127

 45-1 Ramsey Road, Shirley, NY 11967, USA

Chromosome Location	15q26.3
Pathway	immune response; induction of positive chemitaxis; leukocyte chemitaxis
Function	cytokine activity; protein binding

PDB rendering
based on 1i16.



 Tel: 1-631-559-9269 1-516-512-3133

 Email: info@creative-biomart.com  Fax: 1-631-938-8127

 45-1 Ramsey Road, Shirley, NY 11967, USA