

## Recombinant Rhesus IL16 protein

Cat. No. IL16-543R Lot. No. (See product label)

### SPECIFICATION

<b>Product Overview</b>	Recombinant Rhesus IL16 protein was expressed in Escherichia coli.
<b>Species</b>	Rhesus macaque
<b>Source</b>	E.coli
<b>ProteinLength</b>	121
<b>Description</b>	<p>Interleukin-16 (IL-16) is also called lymphocyte chemoattractant factor (LCF) and it is mostly secreted by lymphocytes, epithelial cells, eosinophils, and CD8+ T cells. It has many functions including induction of the IL-2R<math>\alpha</math> on T cells, suppression of human immunodeficiency virus (HIV) replication, inhibition of T-cell antigen receptor/CD3 mediated T-cell stimulation in mixed lymphocyte reactions and so on. It signals through CD4 receptor. Furthermore, recombinant rhesus macaque interleukin-16 contains 121 amino acid residues and it shares 85 % ~ 95 % a.a. sequence identity with human and murine IL-16.</p>
<b>Form</b>	Lyophilized from a 0.2 $\mu$ m filtered concentrated solution in PBS, pH 7.4.
<b>Bio-activity</b>	Fully biologically active when compared to standard. The biological activity determined by a chemotaxis bioassay using human peripheral T lymphocytes is in a concentration range of 1.0-100 ng/ml.
<b>Molecular Mass</b>	Approximately 12.5 kDa, a single non-glycosylated polypeptide chain containing 121 amino acids.

 Tel: 1-631-559-9269 1-516-512-3133

 Email: [info@creative-biomart.com](mailto:info@creative-biomart.com)  Fax: 1-631-938-8127

 45-1 Ramsey Road, Shirley, NY 11967, USA

<b>AA Sequence</b>	SAASASAASDVSVESAEATVYTVTLEKMSAGLGFSLEGGKGS LHGDKPLTINRIFK GAASEQSETIQPGDEILQLAGTAMQGLTRFEAWNIKALPDGPVTIVIRRKSLQPKETT AAADS
<b>Endotoxin</b>	Less than 1 EU/g of rRhIL-16 as determined by LAL method.
<b>Purity</b>	>98% by SDS-PAGE and HPLC analysis.
<b>Storage</b>	Use a manual defrost freezer and avoid repeated freeze-thaw cycles. 12 months from date of receipt, -20 to -70 centigrade as supplied. 1 month, 2 to 8 centigrade under sterile conditions after reconstitution. 3 months, -20 to -70 centigrade under sterile conditions after reconstitution.
<b>Reconstitution</b>	We recommend that this vial be briefly centrifuged prior to opening to bring the contents to the bottom. Reconstitute in sterile distilled water or aqueous buffer containing 0.1 % BSA to a concentration of 0.1-1.0 mg/mL. Stock solutions should be apportioned into working aliquots and stored at ≤-20 centigrade. Further dilutions should be made in appropriate buffered solutions.

## GENE INFORMATION

<b>Gene Name</b>	IL16
<b>Official Symbol</b>	IL16
<b>Synonyms</b>	Interleukin-16, Lymphocyte Chemoattractant Factor, LCF
<b>Gene ID</b>	574100
<b>mRNA Refseq</b>	NM_001374447.1

 Tel: 1-631-559-9269 1-516-512-3133

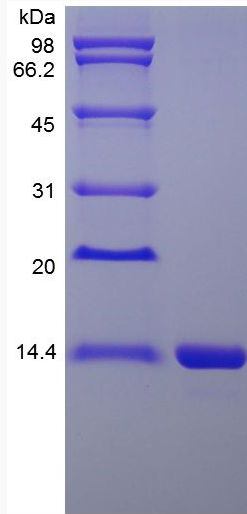
 Email: [info@creative-biomart.com](mailto:info@creative-biomart.com)  Fax: 1-631-938-8127

 45-1 Ramsey Road, Shirley, NY 11967, USA

Protein Refseq NP\_001361376.1

UniProt ID O62675

SDS-PAGE of IL16-543R



 Tel: 1-631-559-9269 1-516-512-3133

 Email: [info@creative-biomart.com](mailto:info@creative-biomart.com)  Fax: 1-631-938-8127

 45-1 Ramsey Road, Shirley, NY 11967, USA