

## Recombinant Human IL16 protein, His & T7-tagged

Cat. No. IL16-865H Lot. No. (See product label)

### SPECIFICATION

<b>Product Overview</b>	Recombinant Human IL16 aa. (Met1203~Ser1332 (Accession # Q14005)) fused with N-terminal His & T7 tag was produced in E. coli cells.
<b>Species</b>	Human
<b>Source</b>	E.coli
<b>ProteinLength</b>	Met1203~Ser1332
<b>Description</b>	<p>The protein encoded by this gene is a pleiotropic cytokine that functions as a chemoattractant, a modulator of T cell activation, and an inhibitor of HIV replication. The signaling process of this cytokine is mediated by CD4. The product of this gene undergoes proteolytic processing, which is found to yield two functional proteins. The cytokine function is exclusively attributed to the secreted C-terminal peptide, while the N-terminal product may play a role in cell cycle control. Caspase 3 is reported to be involved in the proteolytic processing of this protein. Alternate splicing results in multiple transcript variants.</p>
<b>Form</b>	Freeze-dried powder
<b>Molecular Mass</b>	Predicted Molecular Mass: 17.2kDa
<b>Endotoxin</b>	<1.0EU per 1g (determined by the LAL method)
<b>Purity</b>	> 95%

 Tel: 1-631-559-9269 1-516-512-3133

 Email: [info@creative-biomart.com](mailto:info@creative-biomart.com)  Fax: 1-631-938-8127

 45-1 Ramsey Road, Shirley, NY 11967, USA

<b>Characteristic</b>	The isoelectric point is 6.
<b>Applications</b>	SDS-PAGE; WB; ELISA; IP
<b>Stability</b>	The thermal stability is described by the loss rate. The loss rate was determined by accelerated thermal degradation test, that is, incubate the protein at 37°C for 48h, and no obvious degradation and precipitation were observed. The loss rate is less than 5% within the expiration date under appropriate storage condition.
<b>Storage</b>	Avoid repeated freeze/thaw cycles. Store at 2-8°C for one month. Aliquot and store at -80°C for 12 months.
<b>Storage buffer</b>	Supplied as lyophilized form in PBS, pH7.4, containing 5% trehalose, 0.01% sarcosyl
<b>Reconstitution</b>	Reconstitute in sterile PBS, pH7.2-pH7.4

## GENE INFORMATION

<b>Gene Name</b>	IL16 interleukin 16 [ Homo sapiens (human) ]
<b>Official Symbol</b>	IL16
<b>Synonyms</b>	IL16; interleukin 16; LCF; NIL16; PRIL16; prIL-16; pro-interleukin-16; lymphocyte chemoattractant factor; neuronal interleukin 16; prointerleukin 16
<b>Gene ID</b>	3603
<b>mRNA Refseq</b>	NM_001172128.1
<b>Protein Refseq</b>	NP_001165599.1

 Tel: 1-631-559-9269 1-516-512-3133

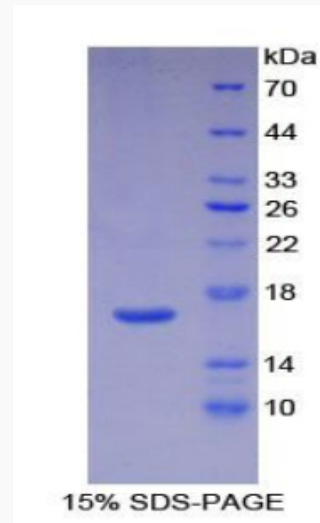
 Email: [info@creative-biomart.com](mailto:info@creative-biomart.com)  Fax: 1-631-938-8127

 45-1 Ramsey Road, Shirley, NY 11967, USA

UniProt ID

Q14005

SDS-PAGE



 Tel: 1-631-559-9269 1-516-512-3133

 Email: [info@creative-biomart.com](mailto:info@creative-biomart.com)  Fax: 1-631-938-8127

 45-1 Ramsey Road, Shirley, NY 11967, USA