

Active Recombinant Human IL17A&IL17F protein, His-tagged

Cat. No. IL17A&IL17F-353H Lot. No. (See product label)

SPECIFICATION

Product Overview	Recombinant Human IL17A&IL17F protein(Q16552(Gly24-Ala155)&Q96PD4(Arg31-Gln163)), fused with His tag, was expressed in HEK293.
Species	Human
Source	HEK293
ProteinLength	Gly24-Ala155&Arg31-Gln163
Form	Lyophilized from 0.22 µm filtered solution in PBS, pH7.4.
Bio-activity	When Recombinant Human IL-17A&F/His Protein is immobilized at 5g/mL (100 µ/well), the concentration of Recombinant Human IL-17RA/His Protein that produces 50% of the optimal binding response is approximately 1.4 ug/ml.
Molecular Mass	The protein has a calculated MW of 15/17kDa.The reducing (R) heterodimer protein migrates as 15-20 kDa and 25-35 kDa due to glycosylation
Endotoxin	<1EU/mg
Purity	SDS-PAGE>90%
Storage	Store at -20°C.
Reconstitution	sterile H62O

 Tel: 1-631-559-9269 1-516-512-3133

 Email: info@creative-biomart.com  Fax: 1-631-938-8127

 45-1 Ramsey Road, Shirley, NY 11967, USA

GENE INFORMATION

Gene Name IL17A interleukin 17A [Homo sapiens]

Official Symbol IL17A

Synonyms IL17A; interleukin 17A; CTLA8, IL17, interleukin 17 (cytotoxic T lymphocyte associated serine esterase 8); interleukin-17A; cytotoxic T lymphocyte associated protein 8; IL 17; IL 17A; CTLA-8; cytotoxic T-lymphocyte-associated antigen 8; cytotoxic T-lymphocyte-associated protein 8; cytotoxic T-lymphocyte-associated serine esterase 8; interleukin 17 (cytotoxic T-lymphocyte-associated serine esterase 8); IL17; CTLA8; IL-17; IL-17A;

Gene ID 3605

mRNA Refseq NM_002190

Protein Refseq NP_002181

MIM 603149

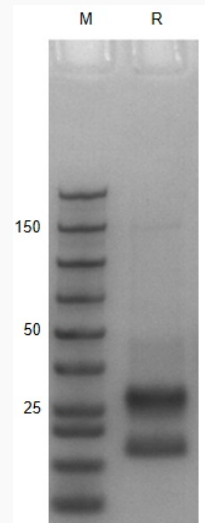
UniProt ID Q16552

 Tel: 1-631-559-9269 1-516-512-3133

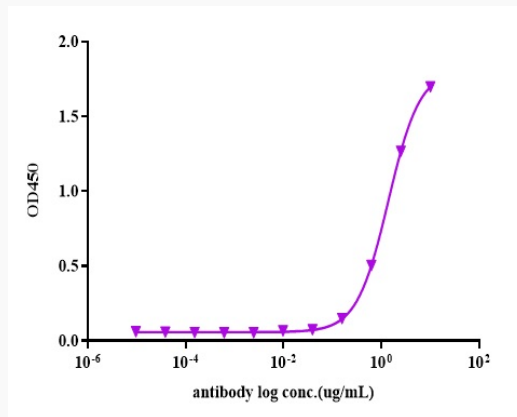
 Email: info@creative-biomart.com  Fax: 1-631-938-8127

 45-1 Ramsey Road, Shirley, NY 11967, USA

SDS-PAGE



ELISA



 Tel: 1-631-559-9269 1-516-512-3133

 Email: info@creative-biomart.com  Fax: 1-631-938-8127

 45-1 Ramsey Road, Shirley, NY 11967, USA