

## Active Recombinant Human IL17A protein, His-tagged

**Cat. No.** IL17A-1235H    **Lot. No.** (See product label)

### SPECIFICATION

<b>Product Overview</b>	Active Recombinant Human IL-17A/CTLA-8 Protein is produced by HEK293 cells expression system. The target protein is expressed with sequence (Ile20-Ala155) of human IL-17A (Accession #NP_002181.1) fused with a 6xHis tag at the C-terminus.
<b>Species</b>	Human
<b>Source</b>	HEK293
<b>ProteinLength</b>	Ile20-Ala155
<b>Form</b>	Lyophilized from a 0.22 µm filtered solution of PBS, pH 7.4.
<b>Bio-activity</b>	<p>1. Measured by its ability to induce IL6 secretion in Hela cells. The ED50 for this effect is 1-6 ng/mL.</p> <p>2. Measured by its binding ability in a functional ELISA. Immobilized Recombinant human IL17RA at 2 µg/mL (100 µL/well) can bind Recombinant human IL-17A, the EC50 of human IL-17A is 32.5-130 ng/mL.</p>
<b>Molecular Mass</b>	18-25 kDa
<b>Endotoxin</b>	< 0.1 EU/µg of the protein by LAL method.
<b>Purity</b>	> 95% by SDS-PAGE.
<b>Storage</b>	Store the lyophilized protein at -20°C to -80 °C for long term.

 Tel: 1-631-559-9269    1-516-512-3133

 Email: [info@creative-biomart.com](mailto:info@creative-biomart.com)     Fax: 1-631-938-8127

 45-1 Ramsey Road, Shirley, NY 11967, USA

After reconstitution, the protein solution is stable at -20 °C for 3 months, at 2-8 °C for up to 1 week.

**Reconstitution** Reconstitute to a concentration of 0.1-0.5 mg/mL in sterile distilled water.

## GENE INFORMATION

**Gene Name** [IL17A interleukin 17A \[ Homo sapiens \]](#)

**Official Symbol** [IL17A](#)

**Synonyms**

IL17A; interleukin 17A; CTLA8, IL17, interleukin 17 (cytotoxic T lymphocyte associated serine esterase 8); interleukin-17A; cytotoxic T lymphocyte associated protein 8; IL 17; IL 17A; CTLA-8; cytotoxic T-lymphocyte-associated antigen 8; cytotoxic T-lymphocyte-associated protein 8; cytotoxic T-lymphocyte-associated serine esterase 8; interleukin 17 (cytotoxic T-lymphocyte-associated serine esterase 8); IL17; CTLA8; IL-17; IL-17A;

**Gene ID** [3605](#)

**mRNA Refseq** [NM\\_002190](#)

**Protein Refseq** [NP\\_002181](#)

**MIM** [603149](#)

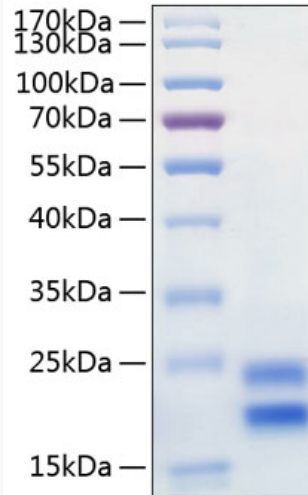
**UniProt ID** [Q16552](#)

 Tel: 1-631-559-9269 1-516-512-3133

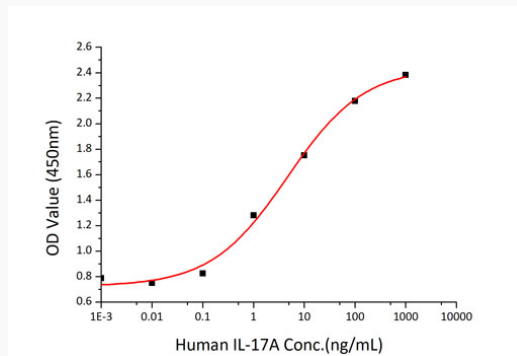
 Email: [info@creative-biomart.com](mailto:info@creative-biomart.com)  Fax: 1-631-938-8127

 45-1 Ramsey Road, Shirley, NY 11967, USA

**SDS-PAGE**



**Activity**



 Tel: 1-631-559-9269 1-516-512-3133

 Email: [info@creative-biomart.com](mailto:info@creative-biomart.com)  Fax: 1-631-938-8127

 45-1 Ramsey Road, Shirley, NY 11967, USA