

Recombinant Active Human IL17A Protein, His-tagged(C-ter)

Cat. No. IL17A-148H Lot. No. (See product label)

SPECIFICATION

| | |
|-------------------------|--|
| Product Overview | Recombinant Active Human IL17A Protein with His tag (C-ter) was expressed in E. coli. |
| Species | Human |
| Source | E.coli |
| Description | The protein encoded by this gene is a proinflammatory cytokine produced by activated T cells. This cytokine regulates the activities of NF-kappaB and mitogen-activated protein kinases. This cytokine can stimulate the expression of IL6 and cyclooxygenase-2 (PTGS2/COX-2), as well as enhance the production of nitric oxide (NO). High levels of this cytokine are associated with several chronic inflammatory diseases including rheumatoid arthritis, psoriasis and multiple sclerosis. [provided by RefSeq, Jul 2008] |
| Form | Powder |
| Bio-activity | Determined by its ability to induce IL-6 secretion in 3T3 cells. The ED50 for this effect is <6 ng/mL. |
| AA Sequence | MIVKAGITIPRNP GCPNSEDKNFRTVMVNLNIHNRNTNTNPKRSSDY YNRSTSPWN LHRNEDPERYPSVIWEAKCRHLGCINADGNVDYHMNSVPIQQEILVLRREPPHCPNS FRLEKILVSVGCTCVTPIVHHVA |
| Endotoxin | Endotoxin level is less than 0.1 EU/μg of the protein, as determined by the LAL test. |

 Tel: 1-631-559-9269 1-516-512-3133

 Email: info@creative-biomart.com  Fax: 1-631-938-8127

 45-1 Ramsey Road, Shirley, NY 11967, USA

| | |
|-------------------------|--|
| Purity | > 98% (by SDS-PAGE) |
| Applications | SDS-PAGE |
| Notes | For laboratory research only, not for drug, diagnostic or other use. |
| Storage | Lyophilized protein should be stored at -20°C. After reconstitution, aliquot and store at -20°C or -80°C for up to one month. Storage in frost free freezers is not recommended. Avoid repeated freeze/thaw cycles. Suggest spin the vial prior to opening. |
| Storage Buffer | PBS (pH 8.0) |
| Reconstitution | It is recommended to reconstitute the lyophilized protein in sterile water to a concentration not less than 100 µg/mL and incubate the stock solution for at least 20 min at room temperature to make sure the protein is dissolved completely. |
| GENE INFORMATION | |
| Gene Name | IL17A interleukin 17A [Homo sapiens] |
| Official Symbol | IL17A |
| Synonyms | IL17A; interleukin 17A; CTLA8, IL17, interleukin 17 (cytotoxic T lymphocyte associated serine esterase 8); interleukin-17A; cytotoxic T lymphocyte associated protein 8; IL 17; IL 17A; CTLA-8; cytotoxic T-lymphocyte-associated antigen 8; cytotoxic T-lymphocyte-associated protein 8; cytotoxic T-lymphocyte-associated serine esterase 8; interleukin 17 (cytotoxic T-lymphocyte-associated serine esterase 8); IL17; CTLA8; IL-17; IL-17A; |
| Gene ID | 3605 |

 Tel: 1-631-559-9269 1-516-512-3133

 Email: info@creative-biomart.com  Fax: 1-631-938-8127

 45-1 Ramsey Road, Shirley, NY 11967, USA

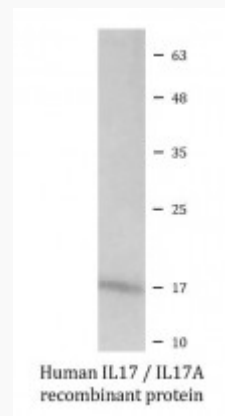
mRNA Refseq [NM_002190](#)

Protein Refseq [NP_002181](#)

MIM [603149](#)

UniProt ID [Q16552](#)

SDS-PAGE



 Tel: 1-631-559-9269 1-516-512-3133

 Email: info@creative-biomart.com  Fax: 1-631-938-8127

 45-1 Ramsey Road, Shirley, NY 11967, USA