

Active Recombinant Human IL17A Protein (Ile20-Ala155), C-His tagged, Animal-free, Carrier-free

Cat. No. IL17A-182H Lot. No. (See product label)

SPECIFICATION

Product Overview	Recombinant Human IL17A Protein (Ile20-Ala155) with C-His tag was expressed in E. coli and Animal-free as well as Carrier-free.
Species	Human
Source	E.coli
ProteinLength	Ile20-Ala155
Description	Interleukin 17A (IL-17A) predicts a molecular mass of 35 kDa, encoded IL17A gene is a proinflammatory cytokine produced by activated T cells. This cytokine regulates the activities of NF-kappa B and mitogen-activated protein kinases.
Form	Lyophilized
Bio-activity	Measure by its ability to induce IL-6 secretion in 3T3 cells. The ED50 for this effect is < 6 ng/mL.
Molecular Mass	The protein has a calculated MW of 16.47 kDa. The protein migrates as 17 kDa under reducing condition (SDS-PAGE analysis).
Endotoxin	< 0.01 EU/μg of the protein by the LAL method.
Purity	>98% as determined by SDS-PAGE analysis.

 Tel: 1-631-559-9269 1-516-512-3133

 Email: info@creative-biomart.com  Fax: 1-631-938-8127

 45-1 Ramsey Road, Shirley, NY 11967, USA



Storage	This product is stable after storage at: -20 centigrade for 12 months in lyophilized state from date of receipt. -20 or -80 centigrade for 1 month under sterile conditions after reconstitution. Avoid repeated freeze/thaw cycles.
Storage Buffer	Lyophilized from a 0.2 µm filtered solution of PBS, pH 8.0.
Reconstitution	It is recommended to reconstitute the lyophilized protein in sterile H2O to a concentration not less than 200 µg/mL and incubate the stock solution for at least 20 min to ensure sufficient re-dissolved.
Shipping	The product is shipped with polar packs. Upon receipt, store it immediately at -20 centigrade or lower for long term storage.
GENE INFORMATION	
Gene Name	IL17A interleukin 17A [Homo sapiens (human)]
Official Symbol	IL17A
Synonyms	IL17A; interleukin 17A; CTLA8, IL17, interleukin 17 (cytotoxic T lymphocyte associated serine esterase 8); interleukin-17A; cytotoxic T lymphocyte associated protein 8; IL 17; IL 17A; CTLA-8; cytotoxic T-lymphocyte-associated antigen 8; cytotoxic T-lymphocyte-associated protein 8; cytotoxic T-lymphocyte-associated serine esterase 8; interleukin 17 (cytotoxic T-lymphocyte-associated serine esterase 8); IL17; CTLA8; IL-17; IL-17A;
Gene ID	3605
mRNA Refseq	NM_002190

Tel: 1-631-559-9269 1-516-512-3133

Email: info@creative-biomart.com Fax: 1-631-938-8127

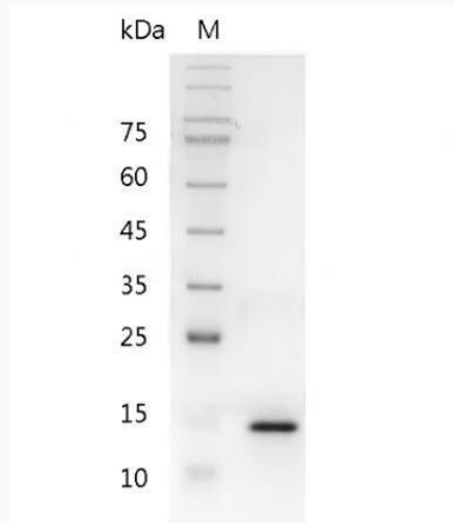
45-1 Ramsey Road, Shirley, NY 11967, USA

Protein Refseq NP_002181

MIM 603149

UniProt ID Q16552

**SDS-PAGE analysis
of recombinant
human IL-17A.**



 Tel: 1-631-559-9269 1-516-512-3133

 Email: info@creative-biomart.com  Fax: 1-631-938-8127

 45-1 Ramsey Road, Shirley, NY 11967, USA