

## Recombinant Human IL17A Protein (Gly24-Ala155), N-His tagged

Cat. No. IL17A-3110H    Lot. No. (See product label)

### SPECIFICATION

<b>Product Overview</b>	Recombinant human IL17A (Gly24-Ala155) protein fused with the N-His tag was expressed in E. coli.
<b>Species</b>	Human
<b>Source</b>	E.coli
<b>ProteinLength</b>	Gly24-Ala155
<b>Molecular Mass</b>	17.42 kDa
<b>Purity</b>	>90 % as determined by SDS-PAGE.
<b>Notes</b>	For research use only.
<b>Storage</b>	Use a manual defrost freezer and avoid repeated freeze thaw cycles. Store at 2 to 8 centigrade for one week. Store at -20 to -80 centigrade for twelve months from the date of receipt.
<b>Storage Buffer</b>	0.01M PBS, pH 7.4, 0.02 % NLS
<b>Reconstitution</b>	Reconstitute in sterile water for a stock solution.
<b>Shipping</b>	In general, proteins are provided as lyophilized powder/frozen liquid. They are

 Tel: 1-631-559-9269    1-516-512-3133

 Email: [info@creative-biomart.com](mailto:info@creative-biomart.com)     Fax: 1-631-938-8127

 45-1 Ramsey Road, Shirley, NY 11967, USA

shipped out with dry ice/blue ice unless customers require otherwise.

## GENE INFORMATION

**Gene Name** [IL17A interleukin 17A \[ Homo sapiens \(human\) \]](#)

**Official Symbol** [IL17A](#)

**Synonyms**

IL17A; interleukin 17A; CTLA8, IL17, interleukin 17 (cytotoxic T lymphocyte associated serine esterase 8); interleukin-17A; cytotoxic T lymphocyte associated protein 8; IL 17; IL 17A; CTLA-8; cytotoxic T-lymphocyte-associated antigen 8; cytotoxic T-lymphocyte-associated protein 8; cytotoxic T-lymphocyte-associated serine esterase 8; interleukin 17 (cytotoxic T-lymphocyte-associated serine esterase 8); IL17; CTLA8; IL-17; IL-17A;

**Gene ID** [3605](#)

**mRNA Refseq** [NM\\_002190](#)

**Protein Refseq** [NP\\_002181](#)

**MIM** [603149](#)

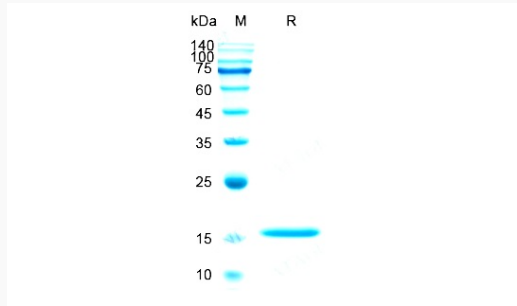
**UniProt ID** [Q16552](#)

 Tel: 1-631-559-9269 1-516-512-3133

 Email: [info@creative-biomart.com](mailto:info@creative-biomart.com)  Fax: 1-631-938-8127

 45-1 Ramsey Road, Shirley, NY 11967, USA

**SDS-PAGE**



 Tel: 1-631-559-9269 1-516-512-3133

 Email: [info@creative-biomart.com](mailto:info@creative-biomart.com)  Fax: 1-631-938-8127

 45-1 Ramsey Road, Shirley, NY 11967, USA