

Recombinant Human IL17A protein, His-Avi-tagged, Biotinylated

Cat. No. IL17A-381HB **Lot. No.** (See product label)

SPECIFICATION

Product Overview	Biotinylated Recombinant Human IL17A Protein is expressed from mammalian with a His and Avi Tag at the C-terminal. It contains Gly 24 - Ala 155.
Species	Human
Source	HEK293
ProteinLength	It contains Gly 24 - Ala 155.
Description	Interleukin-17A (IL-17A), also known as CTLA-8, is a 15-20 kDa glycosylated cytokine that plays an important role in anti-microbial and chronic inflammation. The six IL-17 cytokines (IL-17A-F) are encoded by separate genes but adopt a conserved cystine knot fold .IL-17A is a ligand for IL17RA and IL17RC. The heterodimer formed by IL17A and IL17F is a ligand for the heterodimeric complex formed by IL17RA and IL17RC . Involved in inducing stromal cells to produce proinflammatory and hematopoietic cytokines.
Form	Supplied as 0.22um filtered solution in PBS (pH 7.4).
Molecular Mass	The Protein has a calculated MW of 18.2kDa. As a result of glycosylation, the protein migrates to 19- 21kDa and 25-27kDa based on Bis-Tris PAGE.
Endotoxin	Less than 0.05EU per ug by the LAL method.

 Tel: 1-631-559-9269 1-516-512-3133

 Email: info@creative-biomart.com  Fax: 1-631-938-8127

 45-1 Ramsey Road, Shirley, NY 11967, USA

Purity	> 95% as determined by Bis-Tris PAGE;
Storage	The product should be stored at -70°C. Please do not repeated freeze-thaw cycles.
Reconstitution	It is recommended that sterile water be added to the vial to prepare a stock solution of 0.2 ug/ul. Centrifuge the vial at 4°C before opening to recover the entire contents.
Conjugation	Biotin

GENE INFORMATION

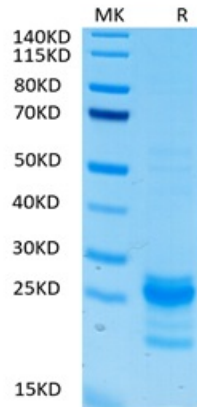
Gene Name	IL17A interleukin 17A [Homo sapiens]
Official Symbol	IL17A
Synonyms	CTLA-8; CTLA8cytotoxic T-lymphocyte-associated serine esterase 8; Cytotoxic T-lymphocyte-associated antigen 8; IL17; IL-17; IL17A; IL-17A; IL-17Acytotoxic T-lymphocyte-associated protein 8; IL-17CTLA-8; IL17interleukin-17A; interleukin 17 (cytotoxic T-lymphocyte-associated serine esterase 8); interleukin 17A
Gene ID	3605
mRNA Refseq	NM_002190
Protein Refseq	NP_002181
MIM	603149
UniProt ID	Q16552

 Tel: 1-631-559-9269 1-516-512-3133

 Email: info@creative-biomart.com  Fax: 1-631-938-8127

 45-1 Ramsey Road, Shirley, NY 11967, USA

Tris-Bis PAGE



 Tel: 1-631-559-9269 1-516-512-3133

 Email: info@creative-biomart.com  Fax: 1-631-938-8127

 45-1 Ramsey Road, Shirley, NY 11967, USA