

## Active Recombinant Human IL-17A Protein, His-tagged

Cat. No. IL17A-491H Lot. No. (See product label)

### SPECIFICATION

<b>Product Overview</b>	Recombinant Human IL-17A Protein(Q16552-1)(Gly24-Ala155) is expressed from Expi293 with His tag at the C-terminal.
<b>Species</b>	Human
<b>Source</b>	HEK293
<b>ProteinLength</b>	Gly24-Ala155
<b>Form</b>	Lyophilized from 0.22um filtered solution in PBS (pH 7.4). Normally 5 % trehalose is added as protectant before lyophilization.
<b>Bio-activity</b>	Immobilized Human IL-17A,His Tag at 0.5µg/ml (100µl/Well) on the plate. Dose response curve for Anti-IL17A Ab. with the EC50 of 7.3ng/ml determined by ELISA.
<b>Molecular Mass</b>	The protein has a predicted MW of 18.2 kDa. Due to glycosylation, the protein migrates to 16-30 kDa based on Tris-Bis PAGE result.
<b>Endotoxin</b>	Less than 1EU per µg by the LAL method.
<b>Purity</b>	> 95% as determined by Tris-Bis PAGE
<b>Storage</b>	The product should be stored at -70°C or -20°C.
<b>Reconstitution</b>	Centrifuge tubes before opening. Reconstituting to a concentration more than 100

 Tel: 1-631-559-9269 1-516-512-3133

 Email: [info@creative-biomart.com](mailto:info@creative-biomart.com)  Fax: 1-631-938-8127

 45-1 Ramsey Road, Shirley, NY 11967, USA

µg/ml is recommended. Dissolve the lyophilized protein in distilled water.

## GENE INFORMATION

**Gene Name** IL17A interleukin 17A [ Homo sapiens ]

**Official Symbol** IL17A

**Synonyms** CTLA-8; CTLA8cytotoxic T-lymphocyte-associated serine esterase 8; Cytotoxic T-lymphocyte-associated antigen 8; IL17; IL-17; IL17A; IL-17A; IL-17Acytotoxic T-lymphocyte-associated protein 8; IL-17CTLA-8; IL17interleukin-17A; interleukin 17 (cytotoxic T-lymphocyte-associated serine esterase 8); interleukin 17A

**Gene ID** 3605

**mRNA Refseq** NM\_002190.2

**Protein Refseq** NP\_002181

**MIM** 603149

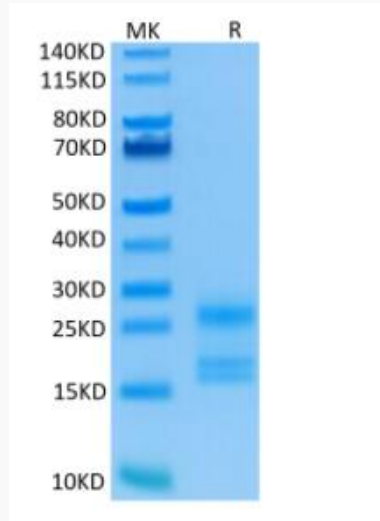
**UniProt ID** Q16552

 Tel: 1-631-559-9269 1-516-512-3133

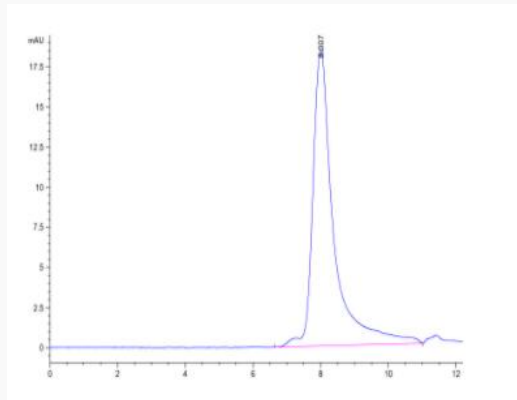
 Email: [info@creative-biomart.com](mailto:info@creative-biomart.com)  Fax: 1-631-938-8127

 45-1 Ramsey Road, Shirley, NY 11967, USA

**SDS-PAGE**



**SEC-HPLC**

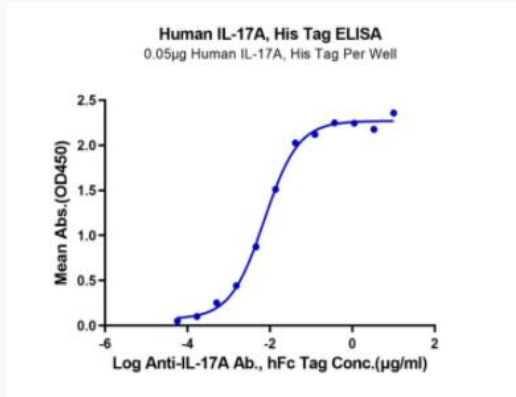


 Tel: 1-631-559-9269 1-516-512-3133

 Email: [info@creative-biomart.com](mailto:info@creative-biomart.com)  Fax: 1-631-938-8127

 45-1 Ramsey Road, Shirley, NY 11967, USA

ELISA Data



 Tel: 1-631-559-9269 1-516-512-3133

 Email: [info@creative-biomart.com](mailto:info@creative-biomart.com)  Fax: 1-631-938-8127

 45-1 Ramsey Road, Shirley, NY 11967, USA