

Recombinant Human IL17A protein, His-Avi-tagged, Biotinylated

Cat. No. IL17A-5633H **Lot. No.** (See product label)

SPECIFICATION

Product Overview	Biotinylated Recombinant Human IL17A protein(Q16552-1)(Gly24-Ala155), fused with C-terminal His and Avi tag, was expressed in HEK293.
Species	Human
Source	HEK293
ProteinLength	Gly24-Ala155
Tag	C-His-Avi
Conjugation/Label	Biotin
Form	Lyophilized from 0.22µm filtered solution in PBS (pH 7.4). Normally 5% trehalose is added as protectant before lyophilization.
Bio-activity	Immobilized Human IL-17A, His Tag at 1µg/ml (100µl/well) on the plate. Dose response curve for Human IL-17R alpha, hFc Tag with the EC50 of 12.4ng/ml determined by ELISA.
Molecular Mass	The protein has a predicted MW of 18.2 kDa. Due to glycosylation, the protein migrates to 16-30 kDa based on Tris-Bis PAGE result.
Endotoxin	Less than 1EU per µg by the LAL method.

 Tel: 1-631-559-9269 1-516-512-3133

 Email: info@creative-biomart.com  Fax: 1-631-938-8127

 45-1 Ramsey Road, Shirley, NY 11967, USA

Purity	> 95% as determined by Tris-Bis PAGE
Storage	Reconstituted protein stable at -80°C for 12 months, 4°C for 1 week. Use a manual defrost freezer and avoid repeated freeze-thaw cycles.
Reconstitution	Centrifuge tubes before opening. Reconstituting to a concentration more than 100 µg/ml is recommended. Dissolve the lyophilized protein in distilled water.
Conjugation	Biotin

GENE INFORMATION

Gene Name	IL17A interleukin 17A [Homo sapiens]
Official Symbol	IL17A
Synonyms	IL17A; interleukin 17A; CTLA8, IL17, interleukin 17 (cytotoxic T lymphocyte associated serine esterase 8); interleukin-17A; cytotoxic T lymphocyte associated protein 8; IL 17; IL 17A; CTLA-8; cytotoxic T-lymphocyte-associated antigen 8; cytotoxic T-lymphocyte-associated protein 8; cytotoxic T-lymphocyte-associated serine esterase 8; interleukin 17 (cytotoxic T-lymphocyte-associated serine esterase 8); IL17; CTLA8; IL-17; IL-17A;
Gene ID	3605
mRNA Refseq	NM_002190
Protein Refseq	NP_002181
MIM	603149

 Tel: 1-631-559-9269 1-516-512-3133

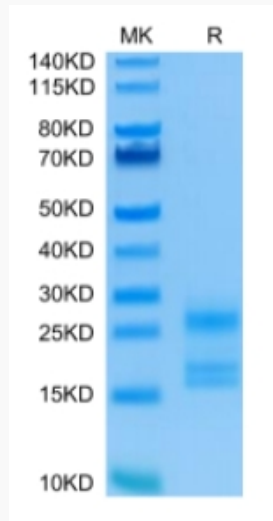
 Email: info@creative-biomart.com  Fax: 1-631-938-8127

 45-1 Ramsey Road, Shirley, NY 11967, USA

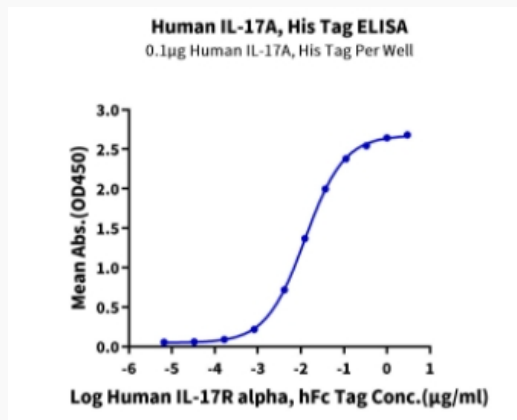
UniProt ID

Q16552

Tris-Bis PAGE



ELISA Data



 Tel: 1-631-559-9269 1-516-512-3133

 Email: info@creative-biomart.com  Fax: 1-631-938-8127

 45-1 Ramsey Road, Shirley, NY 11967, USA