

Recombinant Human IL17A Protein, GST-tagged

Cat. No. IL17A-57H Lot. No. (See product label)

SPECIFICATION

Product Overview Recombinant Human IL17A Protein, fused to GST-tag, was expressed in E. coli.

Species Human

Source E.coli

Description

This gene is a member of the IL-17 receptor family which includes five members (IL-17RA-E) and the encoded protein is a proinflammatory cytokine produced by activated T cells. IL-17A-mediated downstream pathways induce the production of inflammatory molecules, chemokines, antimicrobial peptides, and remodeling proteins. The encoded protein elicits crucial impacts on host defense, cell trafficking, immune modulation, and tissue repair, with a key role in the induction of innate immune defenses. This cytokine stimulates non-hematopoietic cells and promotes chemokine production thereby attracting myeloid cells to inflammatory sites. This cytokine also regulates the activities of NF-kappaB and mitogen-activated protein kinases and can stimulate the expression of IL6 and cyclooxygenase-2 (PTGS2/COX-2), as well as enhance the production of nitric oxide (NO). IL-17A plays a pivotal role in various infectious diseases, inflammatory and autoimmune disorders, and cancer. High levels of this cytokine are associated with several chronic inflammatory diseases including rheumatoid arthritis, psoriasis and multiple sclerosis.

Form Supplied as a 0.2 µm filtered solution in PBS (pH8.0).

Molecular Mass ~40 kDa

 Tel: 1-631-559-9269 1-516-512-3133

 Email: info@creative-biomart.com  Fax: 1-631-938-8127

 45-1 Ramsey Road, Shirley, NY 11967, USA

AA Sequence

MSPILGYWKIKGLVQPTRLLEYLEEKYEEHLYERDEGDKWRNKKFELGLEFPNLPY
 YIDGDVKLTQSMAIIRYIADKHNMMLGGCPKERAEISMLEGAVLDIRYGVSR IAYSKD FE
 TLKVDFLSKLPEMLKMFEDRLCHKTYLNGDHVTHPDFMLYDALDVVLYMDPMCLDA
 FPKLVCFKKRIEAI PQIDKYLKSSKYIAWPLQG WQATFGGGDHPPKSDLVPRGSGITI
 PRNPGCPNSEDKNFPRTVMVNLNIHNRNTNTNPKRSSDY YNRSTSPWNLHRNEDP
 ERYPSVIWEAKCRHLGCINADGNVDYHMNSVPIQQEILVLRREPPHPCNSFRLEKILV
 SVGCTCVTPIVHHVAAAAS

Purity >90%

Storage Store it under sterile conditions at -20 to -80 centigrade. It is recommended that the protein be aliquoted for optimal storage. Avoid repeated freeze-thaw cycles.

Concentration 0.13 mg/ml

GENE INFORMATION

Gene Name IL17A interleukin 17A [Homo sapiens (human)]

Official Symbol IL17A

Synonyms IL17; CTLA8; IL-17; ILA17; CTLA-8; IL-17A

Gene ID 3605

mRNA Refseq NM_002190

Protein Refseq NP_002181

MIM 603149

 Tel: 1-631-559-9269 1-516-512-3133

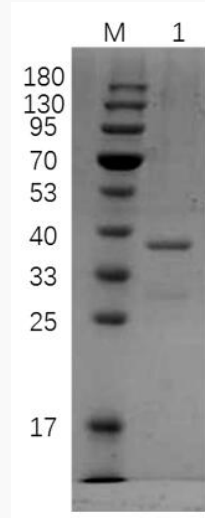
 Email: info@creative-biomart.com  Fax: 1-631-938-8127

 45-1 Ramsey Road, Shirley, NY 11967, USA

UniProt ID

Q16552

SDS-PAGE



12% reducing SDS-PAGE analysis of purified IL17A (approximately 2 mg protein loaded).

 Tel: 1-631-559-9269 1-516-512-3133

 Email: info@creative-biomart.com  Fax: 1-631-938-8127

 45-1 Ramsey Road, Shirley, NY 11967, USA