

Recombinant Human IL17A Protein, Myc/DDK-tagged, C13 and N15-labeled

Cat. No. IL17A-5856H **Lot. No.** (See product label)

SPECIFICATION

Product Overview	IL17A MS Standard C13 and N15-labeled recombinant protein (NP_002181) with a C-terminal MYC/DDK tag, was expressed in HEK293 cells.
Species	Human
Source	HEK293
Description	The protein encoded by this gene is a proinflammatory cytokine produced by activated T cells. This cytokine regulates the activities of NF-kappaB and mitogen-activated protein kinases. This cytokine can stimulate the expression of IL6 and cyclooxygenase-2 (PTGS2/COX-2), as well as enhance the production of nitric oxide (NO). High levels of this cytokine are associated with several chronic inflammatory diseases including rheumatoid arthritis, psoriasis and multiple sclerosis.
Molecular Mass	17.5 kDa
AA Sequence	MTPGKTSLSVLLLLLSLEAIVKAGITIPRNP GCPNSEDKNFPRTVMVNLNIHNRNTNTN PKRSSDY YNRSTSPWNLHRNEDPERYP SVIWEAKCRHLGCINADGNVDYHMNSVPI QQEILVLRREPPHCPNSFRLEKILVSVGCTCVTPIVHHVATRTRPLEQKLISEEDLAN DILDYKDDDDKV
Purity	> 80% as determined by SDS-PAGE and Coomassie blue staining
Stability	Stable for 3 months from receipt of products under proper storage and handling

 Tel: 1-631-559-9269 1-516-512-3133

 Email: info@creative-biomart.com  Fax: 1-631-938-8127

 45-1 Ramsey Road, Shirley, NY 11967, USA

conditions.

Storage Store at -80 centigrade. Avoid repeated freeze-thaw cycles.

Concentration 50 µg/mL as determined by BCA

Storage Buffer 100 mM glycine, 25 mM Tris-HCl, pH 7.3.

GENE INFORMATION

Gene Name [IL17A interleukin 17A \[Homo sapiens \(human\) \]](#)

Official Symbol [IL17A](#)

Synonyms

IL17A; interleukin 17A; CTLA8, IL17, interleukin 17 (cytotoxic T lymphocyte associated serine esterase 8); interleukin-17A; cytotoxic T lymphocyte associated protein 8; IL 17; IL 17A; CTLA-8; cytotoxic T-lymphocyte-associated antigen 8; cytotoxic T-lymphocyte-associated protein 8; cytotoxic T-lymphocyte-associated serine esterase 8; interleukin 17 (cytotoxic T-lymphocyte-associated serine esterase 8); IL17; CTLA8; IL-17; IL-17A;

Gene ID [3605](#)

mRNA Refseq [NM_002190](#)

Protein Refseq [NP_002181](#)

MIM [603149](#)

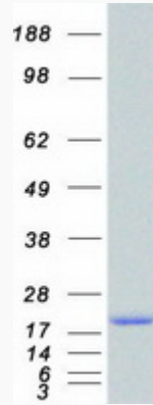
UniProt ID [Q16552](#)

 Tel: 1-631-559-9269 1-516-512-3133

 Email: info@creative-biomart.com  Fax: 1-631-938-8127

 45-1 Ramsey Road, Shirley, NY 11967, USA

SDS-PAGE



 Tel: 1-631-559-9269 1-516-512-3133

 Email: info@creative-biomart.com  Fax: 1-631-938-8127

 45-1 Ramsey Road, Shirley, NY 11967, USA