

Recombinant Dog IL17A protein, His & T7-tagged

Cat. No. IL17A-868D **Lot. No.** (See product label)

SPECIFICATION

Product Overview	Recombinant Dog IL17A aa. (Met1~Ala155 (Accession # C6L8D7)) fused with N-terminal His & T7 tag was produced in E. coli cells.
Species	Dog
Source	E.coli
ProteinLength	Met1~Ala155
Form	Freeze-dried powder
Molecular Mass	Predicted Molecular Mass: 21.6kDa
Endotoxin	<1.0EU per 1g (determined by the LAL method)
Purity	> 95%
Characteristic	The isoelectric point is 9.4.
Applications	SDS-PAGE; WB; ELISA; IP
Stability	The thermal stability is described by the loss rate. The loss rate was determined by accelerated thermal degradation test, that is, incubate the protein at 37°C for 48h, and no obvious degradation and precipitation were observed. The loss rate is less than 5% within the expiration date under appropriate storage condition.

 Tel: 1-631-559-9269 1-516-512-3133

 Email: info@creative-biomart.com  Fax: 1-631-938-8127

 45-1 Ramsey Road, Shirley, NY 11967, USA

Storage	Avoid repeated freeze/thaw cycles. Store at 2-8°C for one month. Aliquot and store at -80°C for 12 months.
Storage buffer	Supplied as lyophilized form in PBS, pH7.4, containing 5% trehalose, 0.01% sarcosyl
Reconstitution	Reconstitute in sterile PBS, pH7.2-pH7.4

GENE INFORMATION

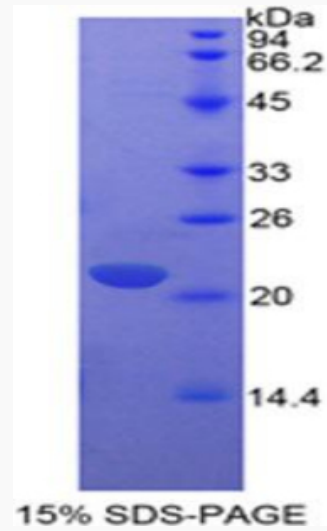
Gene Name	IL17A interleukin 17A [<i>Canis lupus familiaris</i> (dog)]
Official Symbol	IL17A
Synonyms	IL17A; interleukin 17A; interleukin-17A
Gene ID	481837
mRNA Refseq	NM_001165878.1
Protein Refseq	NP_001159350.1
UniProt ID	C6L8D7

 Tel: 1-631-559-9269 1-516-512-3133

 Email: info@creative-biomart.com  Fax: 1-631-938-8127

 45-1 Ramsey Road, Shirley, NY 11967, USA

SDS-PAGE



 Tel: 1-631-559-9269 1-516-512-3133

 Email: info@creative-biomart.com  Fax: 1-631-938-8127

 45-1 Ramsey Road, Shirley, NY 11967, USA