

## Recombinant Human IL17D Protein (Ala18-Pro202), N-His tagged

Cat. No. IL17D-3659H    Lot. No. (See product label)

### SPECIFICATION

|                         |   |
|-------------------------|---|
| <b>Product Overview</b> | Recombinant human IL17D (Ala18-Pro202) protein fused with the N-His tag was expressed in E. coli.   |
| <b>Species</b>          | Human   |
| <b>Source</b>           | E.coli  |
| <b>ProteinLength</b>    | Ala18-Pro202  |
| <b>Molecular Mass</b>   | 22.49 kDa   |
| <b>Purity</b>           | >90 % as determined by SDS-PAGE.  |
| <b>Notes</b>            | For research use only.  |
| <b>Storage</b>          | Use a manual defrost freezer and avoid repeated freeze thaw cycles. Store at 2 to 8 centigrade for one week. Store at -20 to -80 centigrade for twelve months from the date of receipt. |
| <b>Storage Buffer</b>   | 0.01M PBS, pH 7.4, 0.02 % NLS   |
| <b>Reconstitution</b>   | Reconstitute in sterile water for a stock solution.   |
| <b>Shipping</b>         | In general, proteins are provided as lyophilized powder/frozen liquid. They are   |

 Tel: 1-631-559-9269    1-516-512-3133

 Email: [info@creative-biomart.com](mailto:info@creative-biomart.com)     Fax: 1-631-938-8127

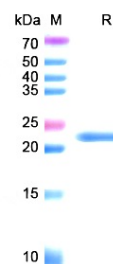
 45-1 Ramsey Road, Shirley, NY 11967, USA

shipped out with dry ice/blue ice unless customers require otherwise.

## GENE INFORMATION

|                        |  |
|------------------------|--|
| <b>Gene Name</b>       | IL17D interleukin 17D [ Homo sapiens (human) ]   |
| <b>Official Symbol</b> | IL17D  |
| <b>Synonyms</b>        | IL17D; interleukin 17D; interleukin-17D; FLJ30846; IL 17D; IL 22; IL 27; IL27; interleukin 27; interleukin-27; IL-22; IL-27; IL-17D; |
| <b>Gene ID</b>         | 53342  |
| <b>mRNA Refseq</b>     | NM_138284  |
| <b>Protein Refseq</b>  | NP_612141  |
| <b>MIM</b>             | 607587   |
| <b>UniProt ID</b>      | Q8TAD2   |

## SDS-PAGE



Tel: 1-631-559-9269 1-516-512-3133

Email: [info@creative-biomart.com](mailto:info@creative-biomart.com) Fax: 1-631-938-8127

45-1 Ramsey Road, Shirley, NY 11967, USA