

Recombinant Human IL17F Protein, His-Tagged

Cat. No. IL17F-01H Lot. No. (See product label)

SPECIFICATION

Product Overview	Recombinant Human IL17F Protein, His-Tagged was expressed in Baculovirus cell line.
Species	Human
Source	Insect Cells
ProteinLength	142aa
Description	The protein encoded by this gene is a cytokine that shares sequence similarity with IL17. This cytokine is expressed by activated T cells, and has been shown to stimulate the production of several other cytokines, including IL6, IL8, and CSF2/GM-CSF. This cytokine is also found to inhibit the angiogenesis of endothelial cells and induce endothelial cells to produce IL2, TGFB1/TGFB, and monocyte chemoattractant protein-1.
Form	Liquid
Molecular Mass	16kDa
Endotoxin	< 1 EU per 1ug of protein (determined by LAL method)
Purity	> 95% by SDS-PAGE
Applications	SDS-PAGE

 Tel: 1-631-559-9269 1-516-512-3133

 Email: info@creative-biomart.com  Fax: 1-631-938-8127

 45-1 Ramsey Road, Shirley, NY 11967, USA

Notes	Note: For research use only. This product is not intended or approved for human, diagnostics or veterinary use.
Storage	Can be stored at +2C to +8C for 1 week. For long term storage, aliquot and store at -20C to -80C. Avoid repeated freezing and thawing cycles.
Concentration	0.5mg/ml (determined by absorbance at 280nm)
Storage Buffer	Liquid in. Phosphate-Buffered Saline (pH 7.4) containing 20% glycerol, 1mM DTT

GENE INFORMATION

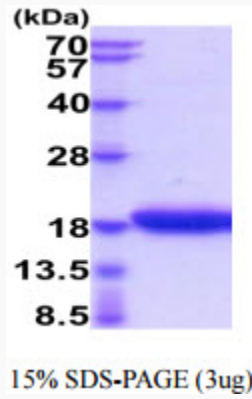
Gene Name	IL17F interleukin 17F [Homo sapiens (human)]
Official Symbol	IL17F
Synonyms	Interleukin-17F, IL17F, CANDF6, IL-17F, ML-1, ML1
Gene ID	112744
mRNA Refseq	NM_052872.4
Protein Refseq	NP_443104.1
MIM	606496
UniProt ID	Q96PD4

 Tel: 1-631-559-9269 1-516-512-3133

 Email: info@creative-biomart.com  Fax: 1-631-938-8127

 45-1 Ramsey Road, Shirley, NY 11967, USA

SDS-PAGE



3ug by SDS-PAGE under reducing condition and visualized by coomassie blue stain

 Tel: 1-631-559-9269 1-516-512-3133

 Email: info@creative-biomart.com  Fax: 1-631-938-8127

 45-1 Ramsey Road, Shirley, NY 11967, USA