

Active Recombinant Human IL17F protein

Cat. No. IL17F-129H Lot. No. (See product label)

SPECIFICATION

Product Overview	Recombinant Human IL17F was expressed in E. coli.
Species	Human
Source	E.coli
Description	<p>Interleukin 17F is a disulfide-linked homodimeric protein belonging to the IL-17 family of proinflammatory cytokines. Members belonging to this family share conserved features of cysteine-knot structures but differ in their N-terminal regions. The T-helper cell produced IL-17 family is inducible by IL15 and IL23, and IL17F induces T-cell and PBMC activation and proliferation. It also performs cartilage matrix turnover and angiogenesis prevention. Out of the IL-17 family, IL17F is the most homologous to IL17 and dimerizes in a way similar to that of nerve growth factors (NGF) and other neurotrophins.</p>
Form	Lyophilized from a 0.2 µm filtered solution in Acetonitrile and TFA (with BSA as a carrier protein)
Bio-activity	The ED50 is 8.0-40.0ng/mL as determined by its ability to induce IL-6 secretion by NIH-3T3 mouse embryonic fibroblast cells.
Molecular Mass	15.2 kDa
Endotoxin	<1.0 EU/µg of recombinant protein as determined by the LAL method.

 Tel: 1-631-559-9269 1-516-512-3133

 Email: info@creative-biomart.com  Fax: 1-631-938-8127

 45-1 Ramsey Road, Shirley, NY 11967, USA

Purity	>95%
Applications	Cell Assay
Storage	The lyophilized protein is stable for at least one year from date of receipt at -70 centigrade. Upon reconstitution, this cytokine can be stored in working aliquots at 2 centigrade - 8 centigrade for one month, or at -20 centigrade for six months, with a carrier protein without detectable loss of activity. Avoid repeated freeze/thaw cycles.
Reconstitution	Reconstitute in sterile 4mM HCl at 25µg/mL (containing at least 0.1% human or bovine serum albumin)

GENE INFORMATION

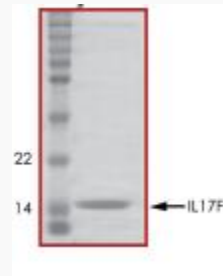
Gene Name	IL17F interleukin 17F [Homo sapiens]
Official Symbol	IL17F
Synonyms	IL17F; interleukin 17F; interleukin-17F; IL 17F; ML 1; ML1; IL-24; cytokine ML-1; mutant IL-17F; interleukin-24; ML-1; CANDF6; IL-17F;
Gene ID	112744
mRNA Refseq	NM_052872
Protein Refseq	NP_443104
MIM	606496
UniProt ID	Q96PD4

 Tel: 1-631-559-9269 1-516-512-3133

 Email: info@creative-biomart.com  Fax: 1-631-938-8127

 45-1 Ramsey Road, Shirley, NY 11967, USA

Chromosome Location	6p12
Pathway	IL23-mediated signaling events, organism-specific biosystem;
Function	cytokine activity; cytokine binding; protein homodimerization activity;



 Tel: 1-631-559-9269 1-516-512-3133

 Email: info@creative-biomart.com  Fax: 1-631-938-8127

 45-1 Ramsey Road, Shirley, NY 11967, USA