

## Recombinant Human IL17F protein, His-Avi-tagged, Biotinylated

Cat. No. IL17F-956HB Lot. No. (See product label)

### SPECIFICATION

<b>Product Overview</b>	Biotinylated Recombinant Human IL17F protein(Q96PD4)(Arg31-Gln163), fused with C-terminal His and Avi tag, was expressed in HEK293.
<b>Species</b>	Human
<b>Source</b>	HEK293
<b>ProteinLength</b>	Arg31-Gln163
<b>Tag</b>	C-His-Avi
<b>Conjugation/Label</b>	Biotin
<b>Form</b>	Supplied as 0.22µm filtered solution in PBS (pH 7.4).
<b>Bio-activity</b>	Immobilized Human IL-17 R alpha, hFc Tag at 2ug/ml (100ul/well) on the plate. Dose response curve for Biotinylated Human IL-17F, His Tag with the EC50 of 1.16ug/ml determined by ELISA.
<b>Molecular Mass</b>	The protein has a predicted MW of 17.5 /14.9 kDa. Due to glycosylation, the protein migrates to 23-28 kDa based on Tris-Bis PAGE result.
<b>Endotoxin</b>	Less than 1EU per µg by the LAL method.

 Tel: 1-631-559-9269 1-516-512-3133

 Email: [info@creative-biomart.com](mailto:info@creative-biomart.com)  Fax: 1-631-938-8127

 45-1 Ramsey Road, Shirley, NY 11967, USA

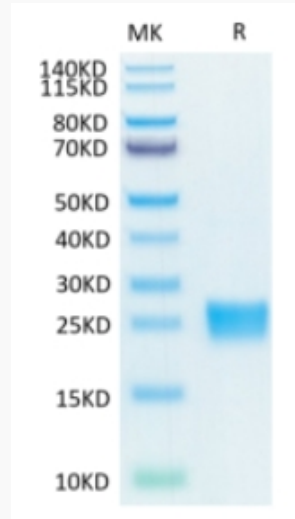
<b>Purity</b>	> 95% as determined by Tris-Bis PAGE;> 95% as determined by HPLC
<b>Storage</b>	Valid for 12 months from date of receipt when stored at -80°C.; Recommend to aliquot the protein into smaller quantities for optimal storage. Please do not repeated freeze-thaw cycles.
<b>Reconstitution</b>	
<b>Conjugation</b>	Biotin
<b>GENE INFORMATION</b>	
<b>Gene Name</b>	IL17F interleukin 17F [ Homo sapiens ]
<b>Official Symbol</b>	IL17F
<b>Synonyms</b>	IL17F; interleukin 17F; interleukin-17F; IL 17F; ML 1; ML1; IL-24; cytokine ML-1; mutant IL-17F; interleukin-24; ML-1; CANDF6; IL-17F;
<b>Gene ID</b>	112744
<b>mRNA Refseq</b>	NM_052872
<b>Protein Refseq</b>	NP_443104
<b>MIM</b>	606496
<b>UniProt ID</b>	Q96PD4

 Tel: 1-631-559-9269 1-516-512-3133

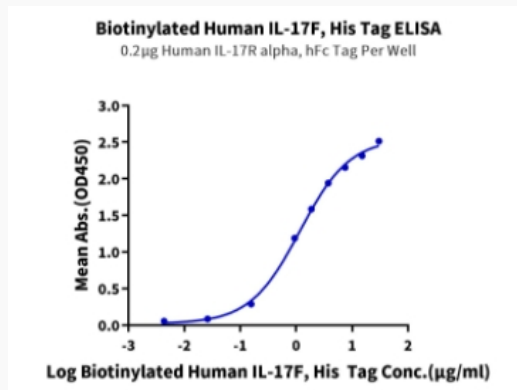
 Email: [info@creative-biomart.com](mailto:info@creative-biomart.com)  Fax: 1-631-938-8127

 45-1 Ramsey Road, Shirley, NY 11967, USA

**Tris-Bis PAGE**



**ELISA Data**



 Tel: 1-631-559-9269 1-516-512-3133

 Email: [info@creative-biomart.com](mailto:info@creative-biomart.com)  Fax: 1-631-938-8127

 45-1 Ramsey Road, Shirley, NY 11967, USA