

## Recombinant Human IL17F protein, His-Avi-tagged

**Cat. No.** IL17F-964H    **Lot. No.** (See product label)

### SPECIFICATION

<b>Product Overview</b>	Human IL-17F Protein is expressed from mammalian with His Tag and Avi Tag at the C-terminal. It contains Arg31-Gln163.
<b>Species</b>	Human
<b>Source</b>	HEK293
<b>ProteinLength</b>	Arg31-Gln163
<b>Description</b>	The Interleukin 17 (IL-17) family proteins, comprising six members (IL-17A through IL-17F), are secreted, structurally related proteins that share a conserved cystine-knot fold near the Cterminus, but have considerable sequence divergence at the N-terminus.IL-17F is ligand for IL17RA and IL17RC. The heterodimer formed by IL17A and IL17F is a ligand for the heterodimeric complex formed by IL17RA and IL17RC. Involved in stimulating the production of other cytokines such as IL6, IL8 and CSF2, and in regulation of cartilage matrix turnover.
<b>Form</b>	Supplied as 0.22um filtered solution in PBS (pH 7.4).
<b>Molecular Mass</b>	The protein has a predicted MW of 17.8KDa. Due to glycosylation, the protein migrates to 24- 27KDa based on Bis-Tris PAGE result.
<b>Endotoxin</b>	Less than 0.1EU per ug by the LAL method.
<b>Purity</b>	> 95% as determined by SDS-PAGE; > 95% as determined by HPLC

 Tel: 1-631-559-9269    1-516-512-3133

 Email: [info@creative-biomart.com](mailto:info@creative-biomart.com)     Fax: 1-631-938-8127

 45-1 Ramsey Road, Shirley, NY 11967, USA

**Storage** The product should be stored at -70°C. Please do not repeated freeze-thaw cycles.

## GENE INFORMATION

**Gene Name** IL17F interleukin 17F [ Homo sapiens (human) ]

**Official Symbol** IL17F

**Synonyms** Cytokine ML-1; IL17F; IL-17F; IL-17Finterleukin-17F; IL24; IL-24; interleukin 17F; Interleukin-24; ML-1; ML1interleukin-24

**Gene ID** 112744

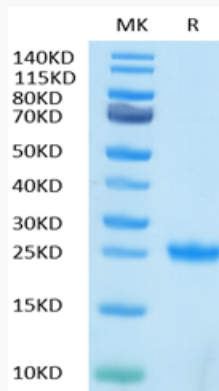
**mRNA Refseq** NM\_052872.4

**Protein Refseq** NP\_443104.1

**MIM** 606496

**UniProt ID** Q96PD4

**Tris-Bis PAGE of  
IL17F-964H**



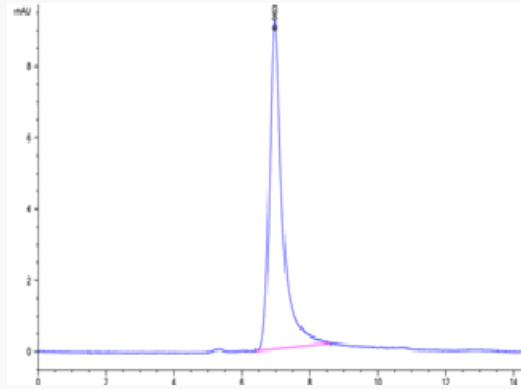
 Tel: 1-631-559-9269 1-516-512-3133

 Email: [info@creative-biomart.com](mailto:info@creative-biomart.com)  Fax: 1-631-938-8127

 45-1 Ramsey Road, Shirley, NY 11967, USA



**SEC-HPLC of IL17F-  
964H**



Tel: 1-631-559-9269 1-516-512-3133

Email: [info@creative-biomart.com](mailto:info@creative-biomart.com) Fax: 1-631-938-8127

45-1 Ramsey Road, Shirley, NY 11967, USA