

## Recombinant Human IL17RA protein, His-Avi-tagged

Cat. No. IL17RA-208H Lot. No. (See product label)

### SPECIFICATION

<b>Product Overview</b>	Human IL-17RA Protein is expressed from mammalian with a His and Avi Tag at the C-terminal. It contains Leu33 - Trp320.
<b>Species</b>	Human
<b>Source</b>	HEK293
<b>ProteinLength</b>	It contains Leu33 - Trp320.
<b>Description</b>	Interleukin 17 (also known as CTLA-8) is a T cell-expressed pleotropic cytokine. IL-17 binds to IL-17 receptor (IL-17 R) which shares no homology with any known family of receptors. While the expression of IL-17 is restricted to activated T cells, the IL-17 R mRNA exhibits a broad tissue distribution, and has been detected in virtually all cells and tissues tested. The human IL-17 R gene was localized to chromosome 22.
<b>Form</b>	Supplied as 0.22um filtered solution in PBS (pH 7.4).
<b>Molecular Mass</b>	The Human Protein has a calculated MW of 36.4kDa. As a result of glycosylation, the protein migrates to 60-70kDa based on Bis-Tris PAGE.
<b>Endotoxin</b>	Less than 0.01EU per ug by the LAL method.
<b>Purity</b>	> 95% as determined by Bis-Tris PAGE; > 92% as determined by HPLC

 Tel: 1-631-559-9269 1-516-512-3133

 Email: [info@creative-biomart.com](mailto:info@creative-biomart.com)  Fax: 1-631-938-8127

 45-1 Ramsey Road, Shirley, NY 11967, USA

**Storage** The product should be stored at -70°C. Please do not repeated freeze-thaw cycles.

**Reconstitution** It is recommended that sterile water be added to the vial to prepare a stock solution of 0.2 ug/ul. Centrifuge the vial at 4°C before opening to recover the entire contents.

## GENE INFORMATION

**Gene Name** [IL17RA interleukin 17 receptor A \[ Homo sapiens \]](#)

**Official Symbol** [IL17RA](#)

**Synonyms** CD217,CDw217,IL-17RA,IL17R,CANDF5,hIL-17R, IL17RA

**Gene ID** [23765](#)

**mRNA Refseq** [NM\\_014339](#)

**Protein Refseq** [NP\\_055154](#)

**MIM** [605461](#)

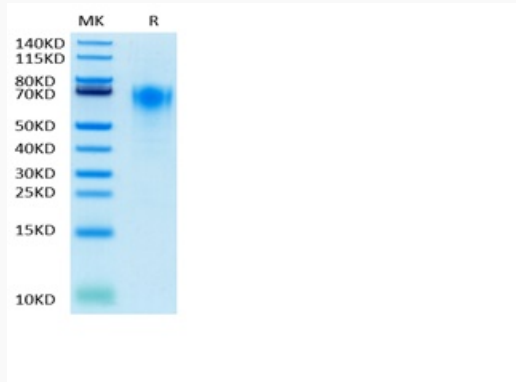
**UniProt ID** [Q96F46](#)

 Tel: 1-631-559-9269 1-516-512-3133

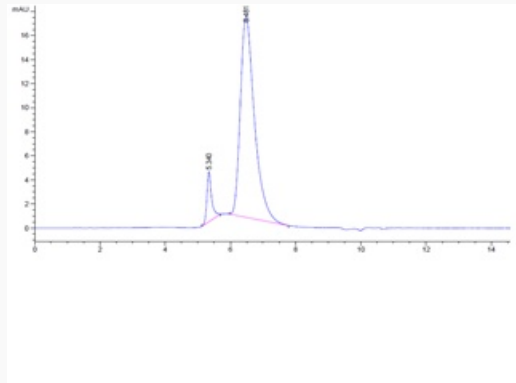
 Email: [info@creative-biomart.com](mailto:info@creative-biomart.com)  Fax: 1-631-938-8127

 45-1 Ramsey Road, Shirley, NY 11967, USA

**Tris-Bis PAGE**



**HPLC data**



 Tel: 1-631-559-9269 1-516-512-3133

 Email: [info@creative-biomart.com](mailto:info@creative-biomart.com)  Fax: 1-631-938-8127

 45-1 Ramsey Road, Shirley, NY 11967, USA